



1. Expand the Tank you wish to add the Product into.



2. Press on the **Top area** of the Tank- to open the Product Configuration Window

Note: You must have the Tank full expanded.

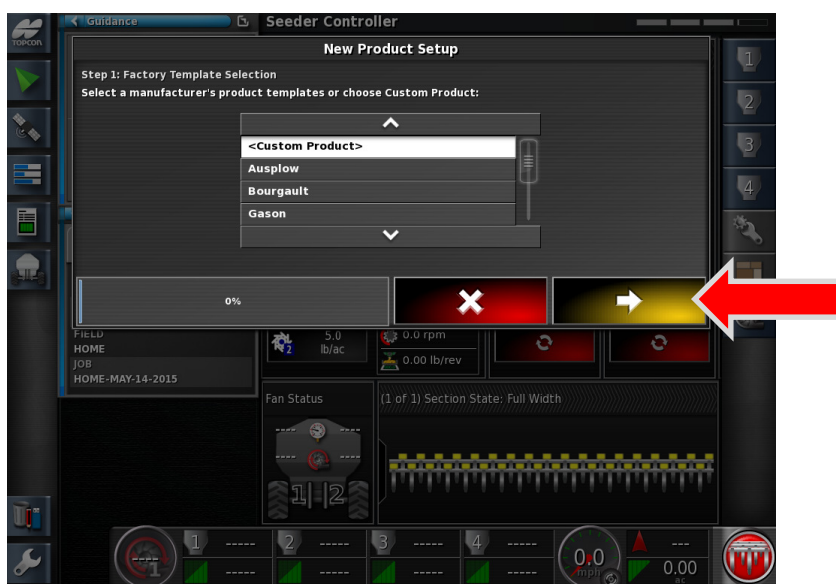
5 – Create Product



3. Press on the **Product Name Window**.



4. Select **New Product**.



5. Chose **Custom Product**, proceed by pressing the Yellow forward arrow after each step.



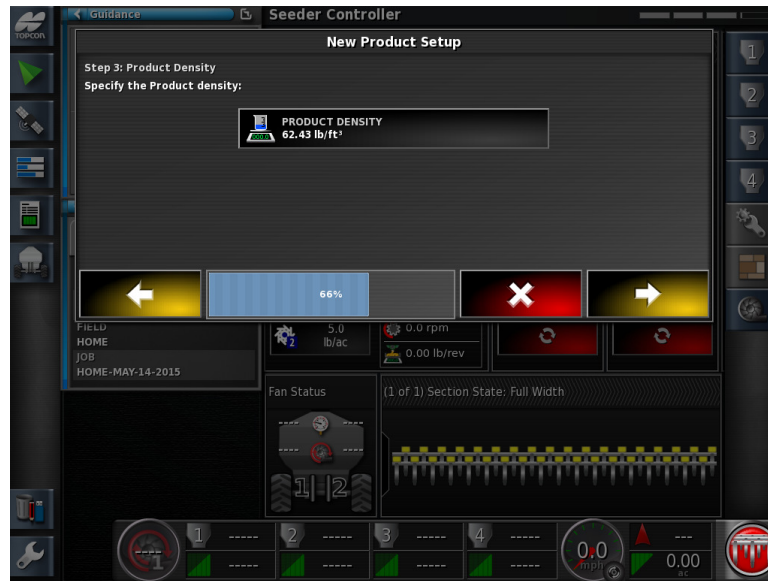
6. Tap on the **PRODUCT NAME**.



7. Enter a product name, as an example we are using **CAN-BLEND**.



TIP: we use an abbreviation of the word Canola, this because when the tanks are collapsed on the SEEDER-HOME screen the names become shortened. CANOLA-BLEND would appear as CANOLA... Thus causing confusion as to which is the SEED and which is the Fertilizer.



8. Enter Product **Density** (The density of the product can be requested by the distributor of the seed or fertilizer). Note: The X30 default rate is Pounds Per Cubic Foot. These settings can be changed in Regional Units.

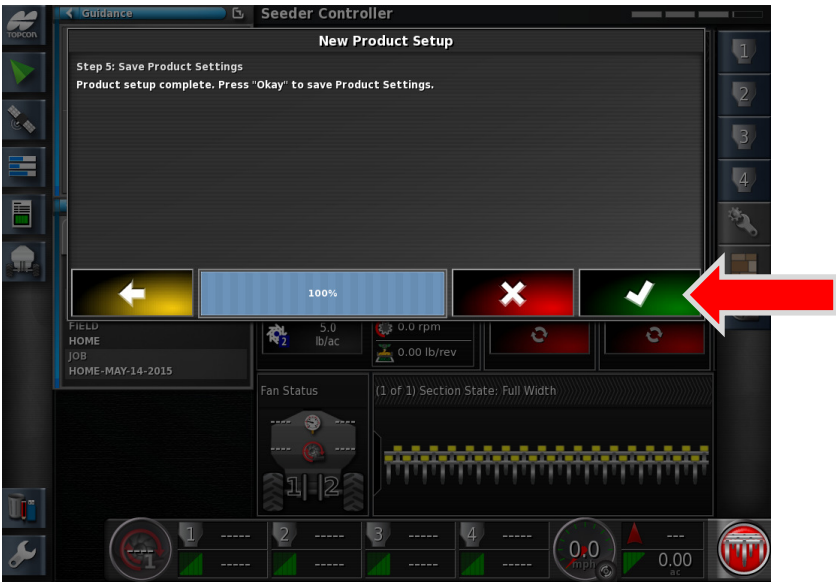


9. Enter Product **Rate increment** and **Preset Rates**.

Rate increment- Used for quickly bumping the rates up or down (+/-) while moving.

Preset 1 – Enter the desired rate you will be seeding at.

Preset 2 - Used to split the rate if you have the same product in the Front and Rear Tanks.



10. Proceed by touching the Green Check box.



11. Review the product data. Apply with the Green Check mark.