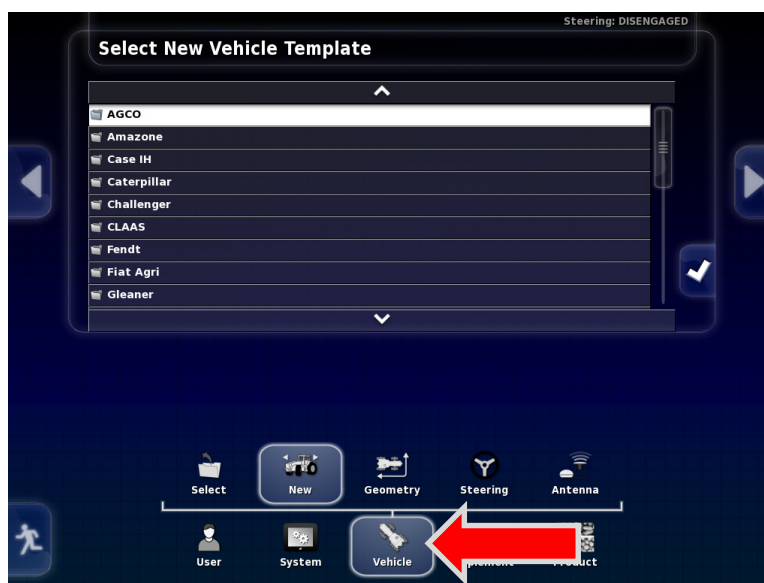
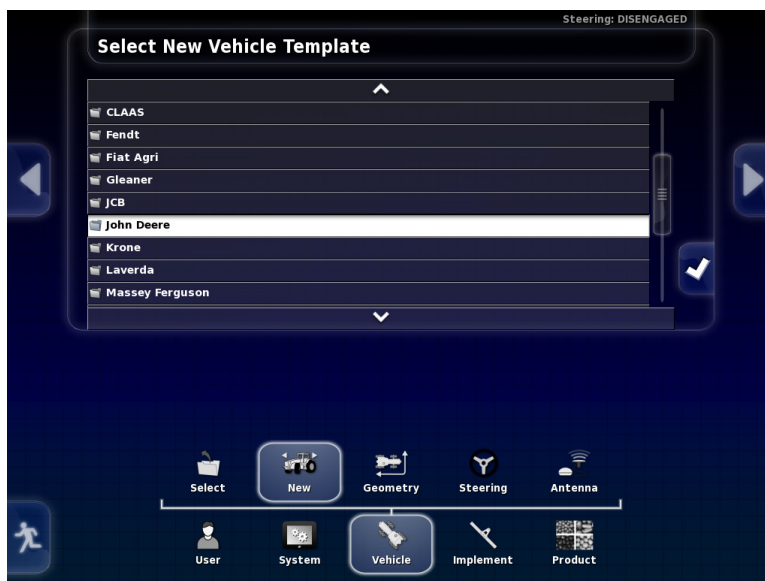


12. Toggle the **Multi-Function Region Mode** to **Save/Load Global Home Screen**. Apply with the Green Check mark.



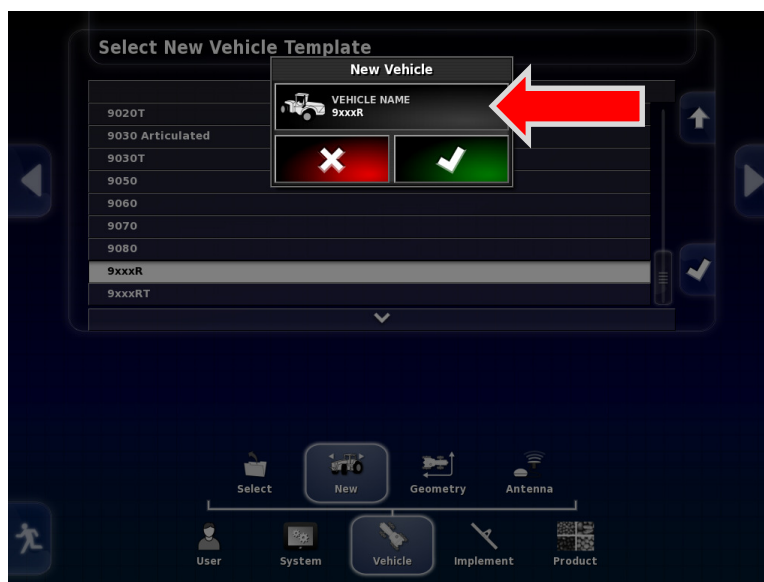
13. Continue to **Vehicle – New**.



14. Select your **brand of tractor manufacture** from the list.



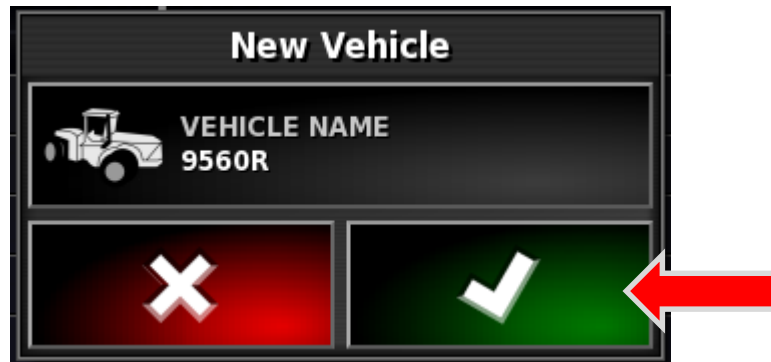
15. Select the **Model of tractor** from the list. Press the **White Check** mark to Continue.



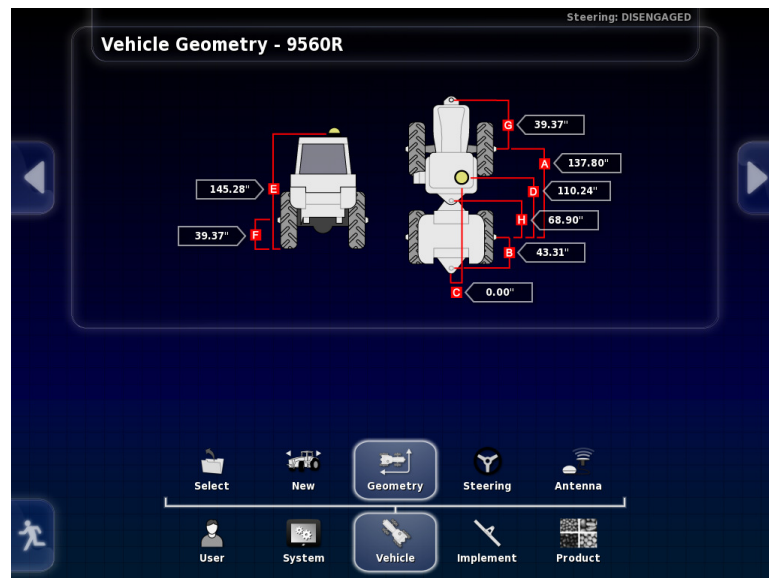
16. Adjust the name to match your model of tractor.



17. Press the back space and rename. Apply with the Green check mark.



18. Confirm the model is correct. Apply with the green check mark.



19. Adjust the dimensions as needed. Use a tape measure, and record your dimensions on a note pad.

It is very important to have the dimensions as accurate as possible. Especially when equipped with an ICT unit.



20. Navigate from **System-GPS- Receiver**. Select the Type of GPS antenna you will be using. The default entry level antenna which is included with the X30 is the SGR-1.

SGR-1 - receiver

Baud rate - 115200.

Serial Port COM 1

21. If you prefer to connect a 3rd party OEM GPS receiver system such as John Deere Green Star 3000 see Section – 14 GPS Connection.



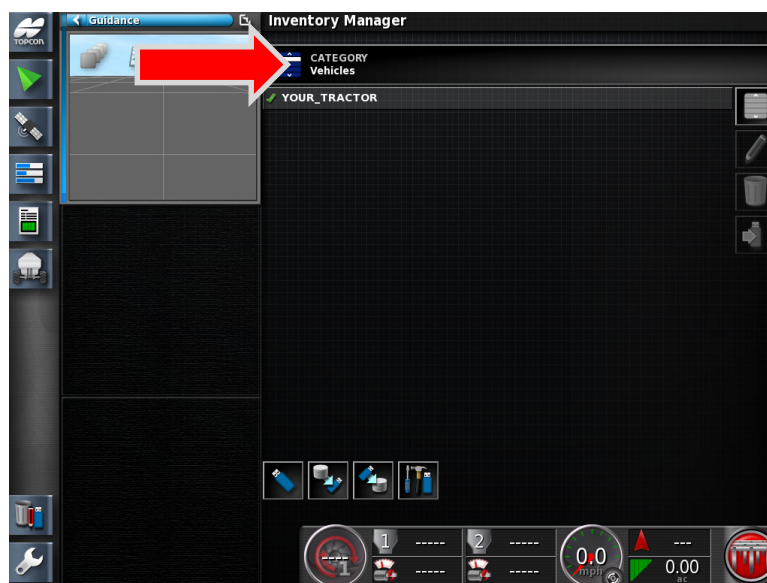
22. Press the **Running man** icon to return back to the Home screen.



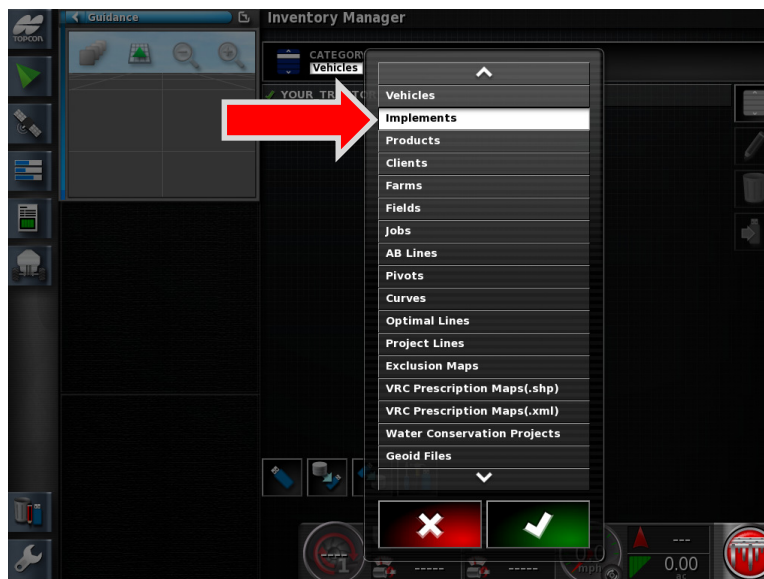
23. Insert the **Master Profile List** USB stick into the side of the X30 monitor.



24. Press the Inventory Manager Icon.



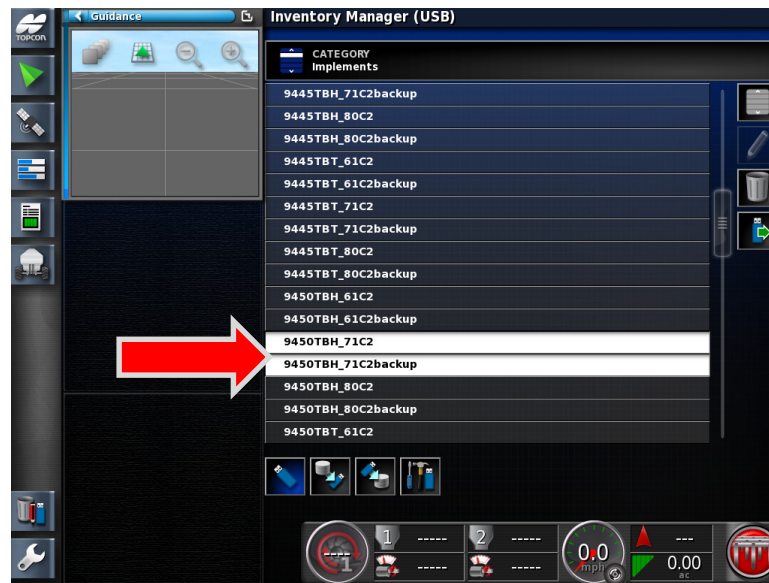
25. Press the **CATEGORY** tab.



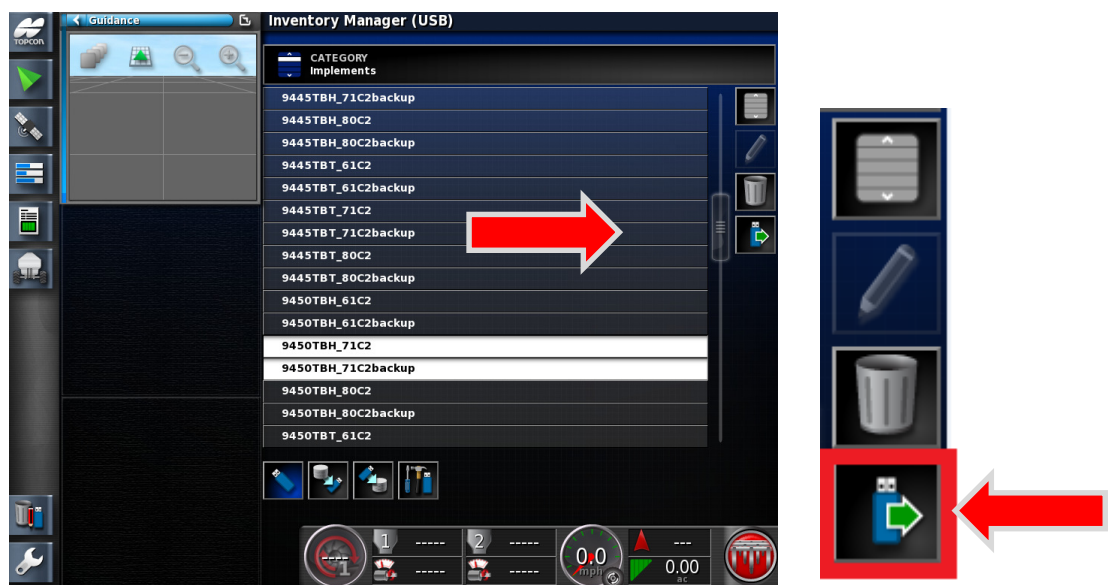
26. A drop down list will appear, select **Implements** from the list. Press the Green check mark.



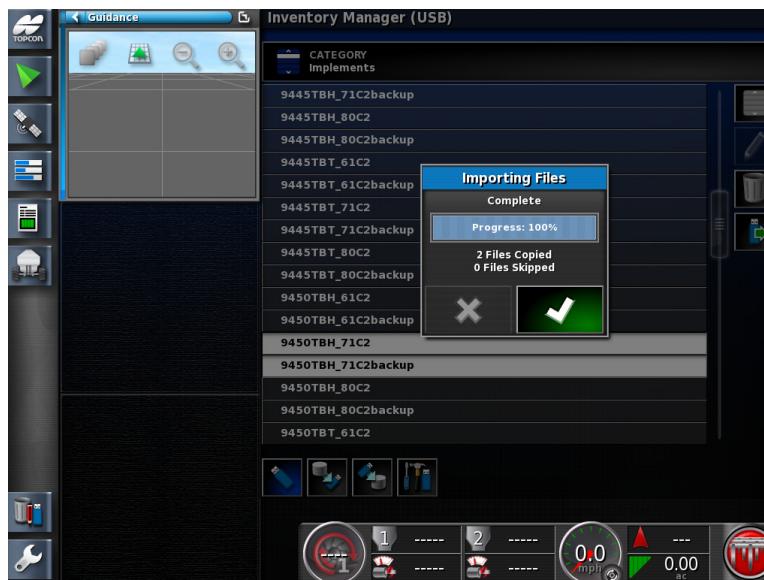
27. Press the **Switch** view between internal file system and USB file system.



28. Find the correct Implement that the monitor will be used with. Highlight the profile along with the corresponding backup.



29. Press the **Export** icon which is on the (Right hand side) of the screen.



30. The two profiles will now transfer into the X30 main memory.



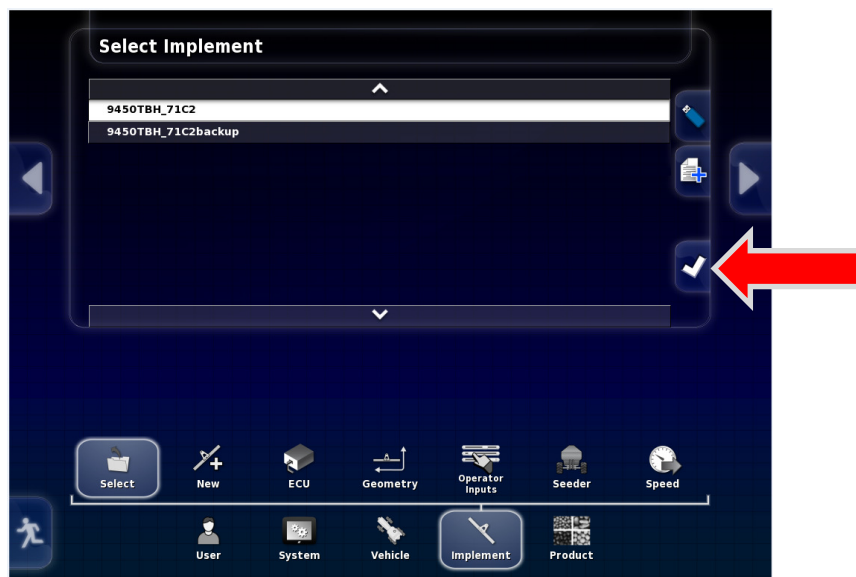
31. At this time it would best to remove the USB memory stick. Press the **USB Eject Icon** on the bottom left of the monitor.



32. An Eject USB message will appear – you may now remove the USB stick. Press the green check mark to continue.



33. Notice the files have transferred successfully. Press the **Set-up wrench**.



34. Navigate from **Implement - Select**- Choose the Profile. Apply with the **White Check** Mark.

*Note: The backup profile should only be used only for troubleshooting purposes by a qualified dealer or Morris 360 service technicians.



35. The System will now restart.