



X30 MONITOR TRAINING

ICT Module 1 : Aircart Setup

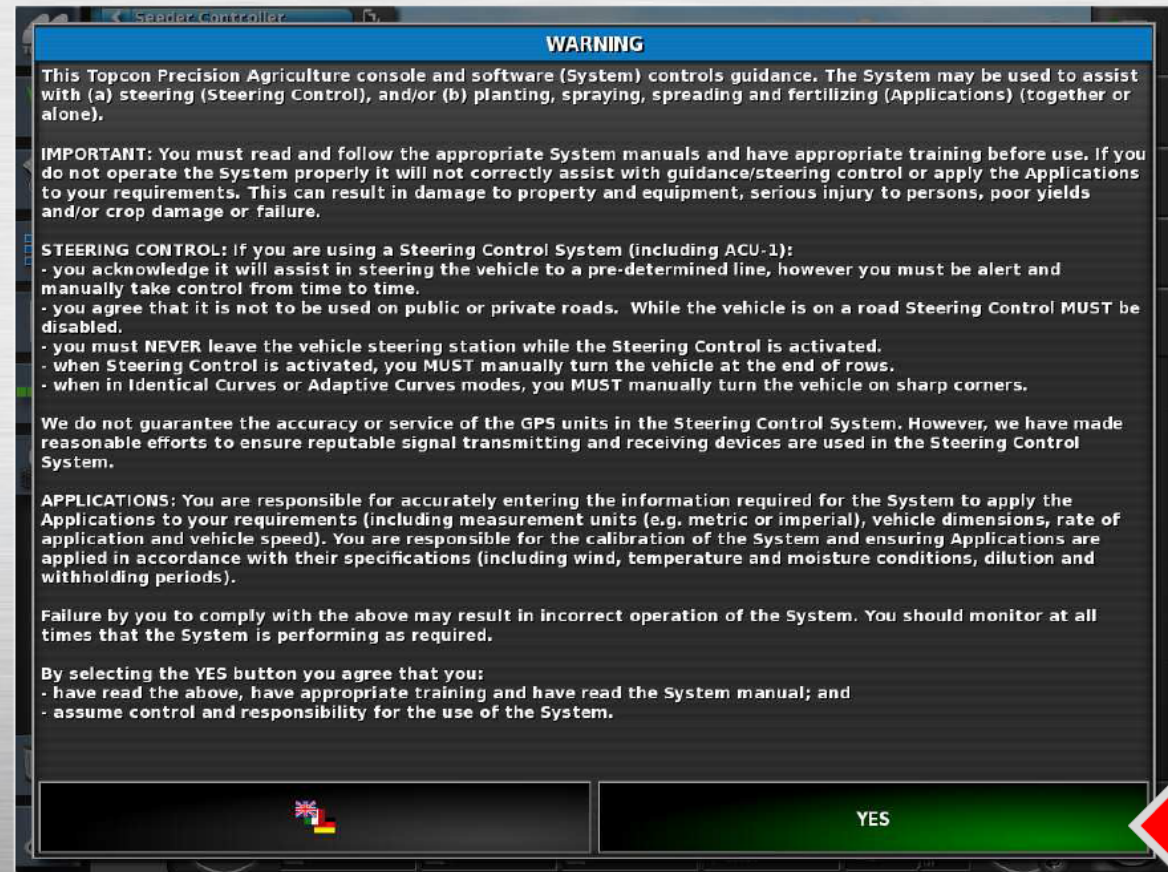
STEP 1

- Turn the monitor ON by pressing and holding the Green Button on the Back left side of the monitor for 5 seconds.
- The guidance LEDS will flash and the loading screen will be displayed.



STEP 2

- Press **YES** after completely reading and understanding the warning.



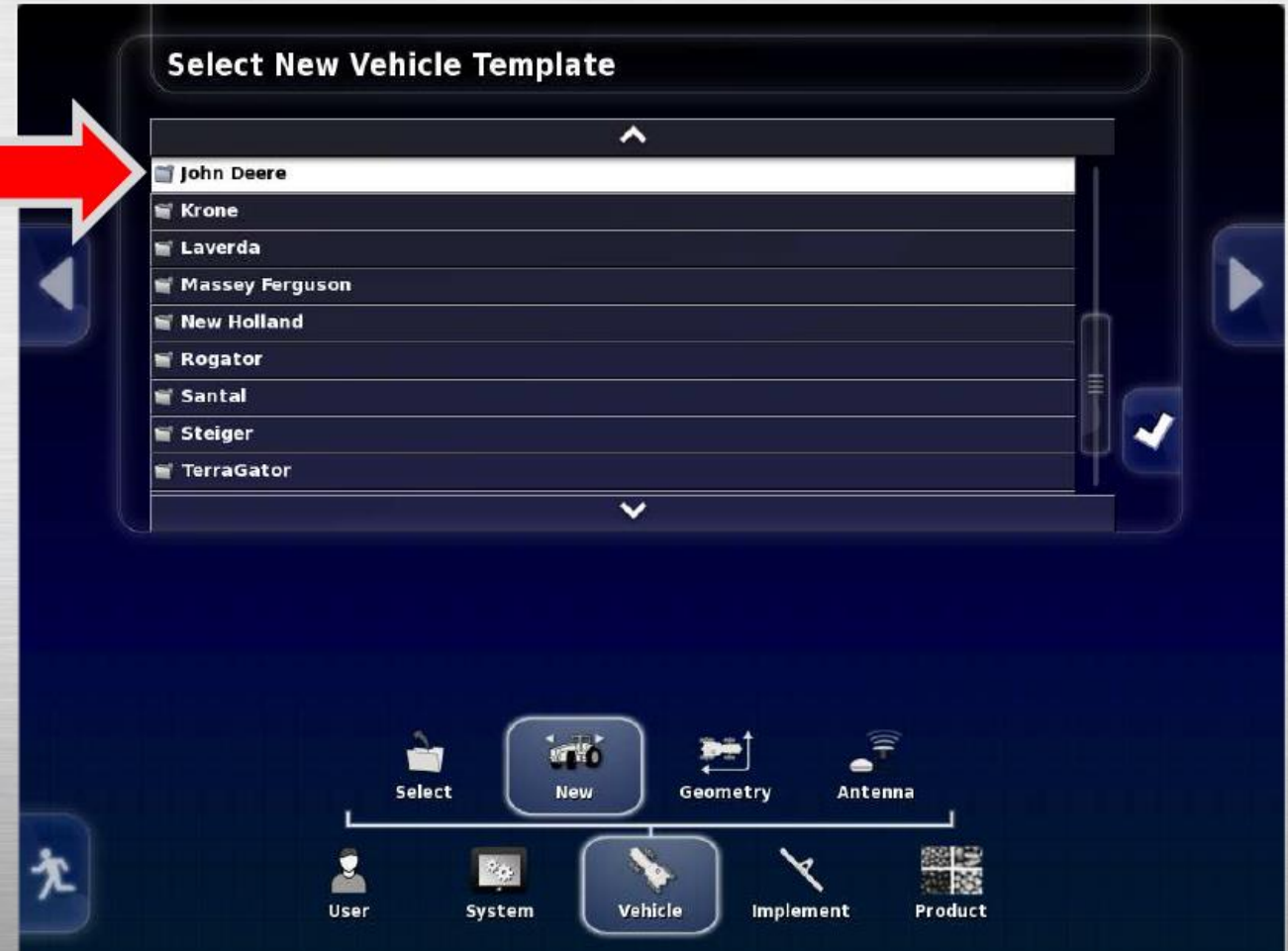
STEP 3

- Press the **Wrench** on the **Bottom Left Corner** to enter the **Set up Menu**



STEP 4

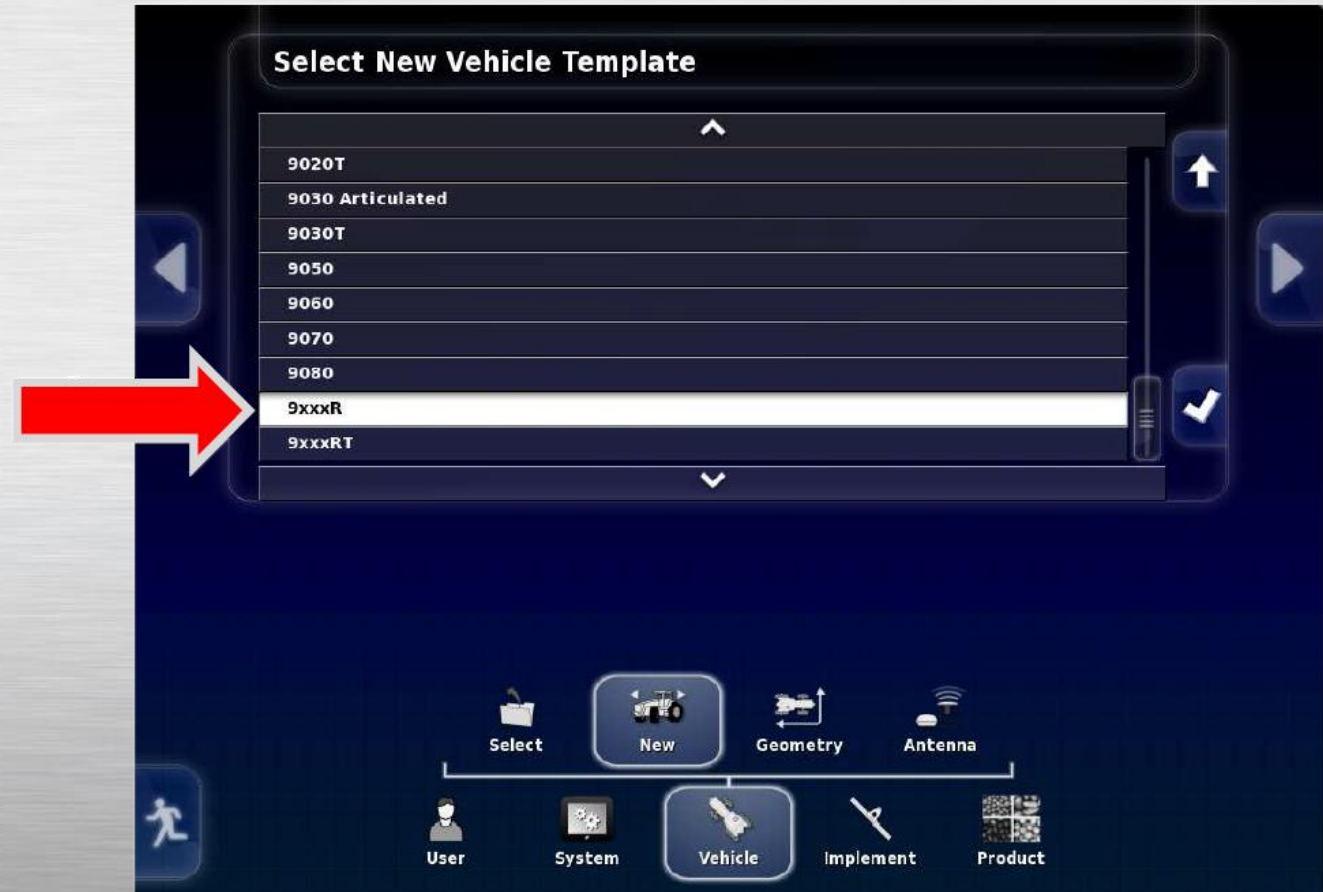
- Navigate to **Vehicle-New**.
Create a new vehicle based on the manufacture of tractor you are using.
Example : **John Deere**



STEP 5

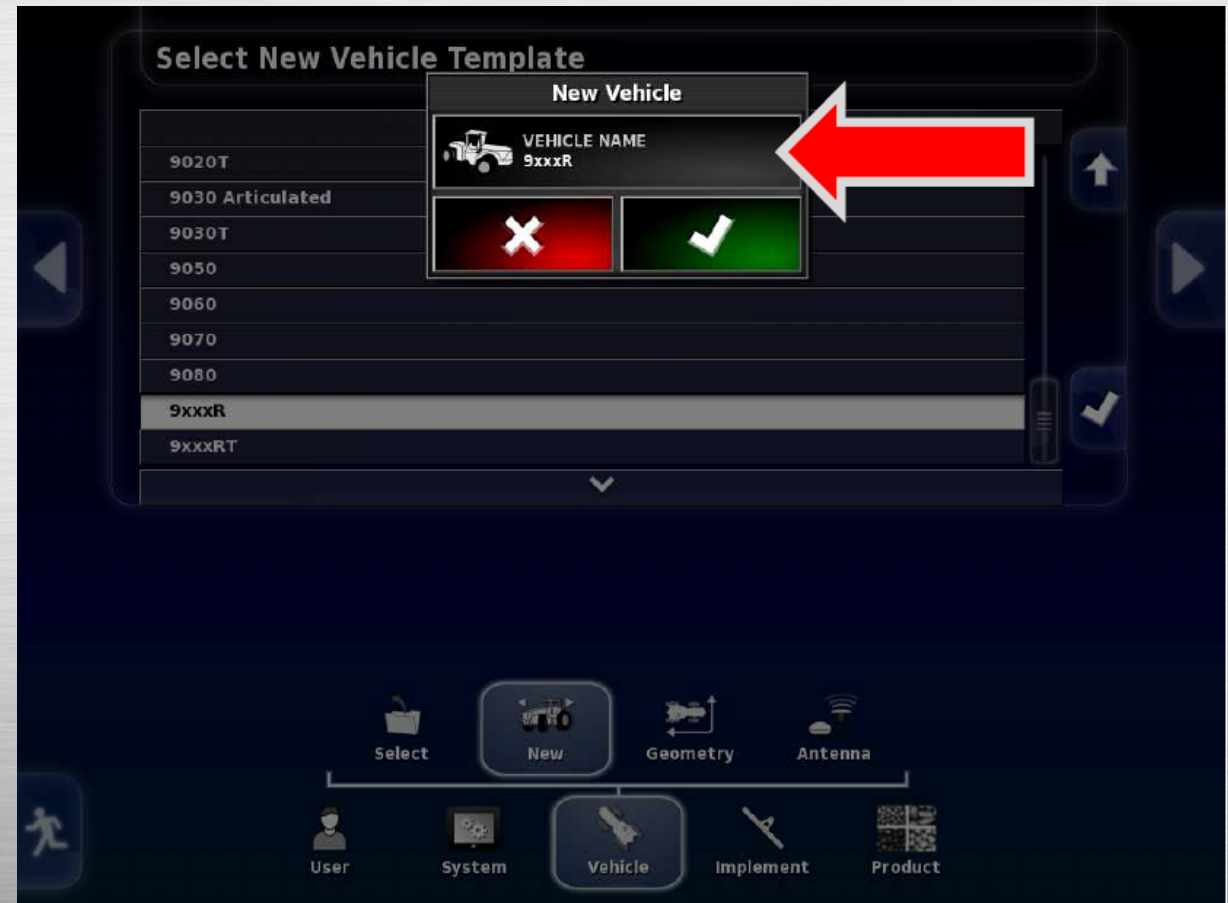
- Select the profile that best matches your tractor.

Example: **9xxxR**



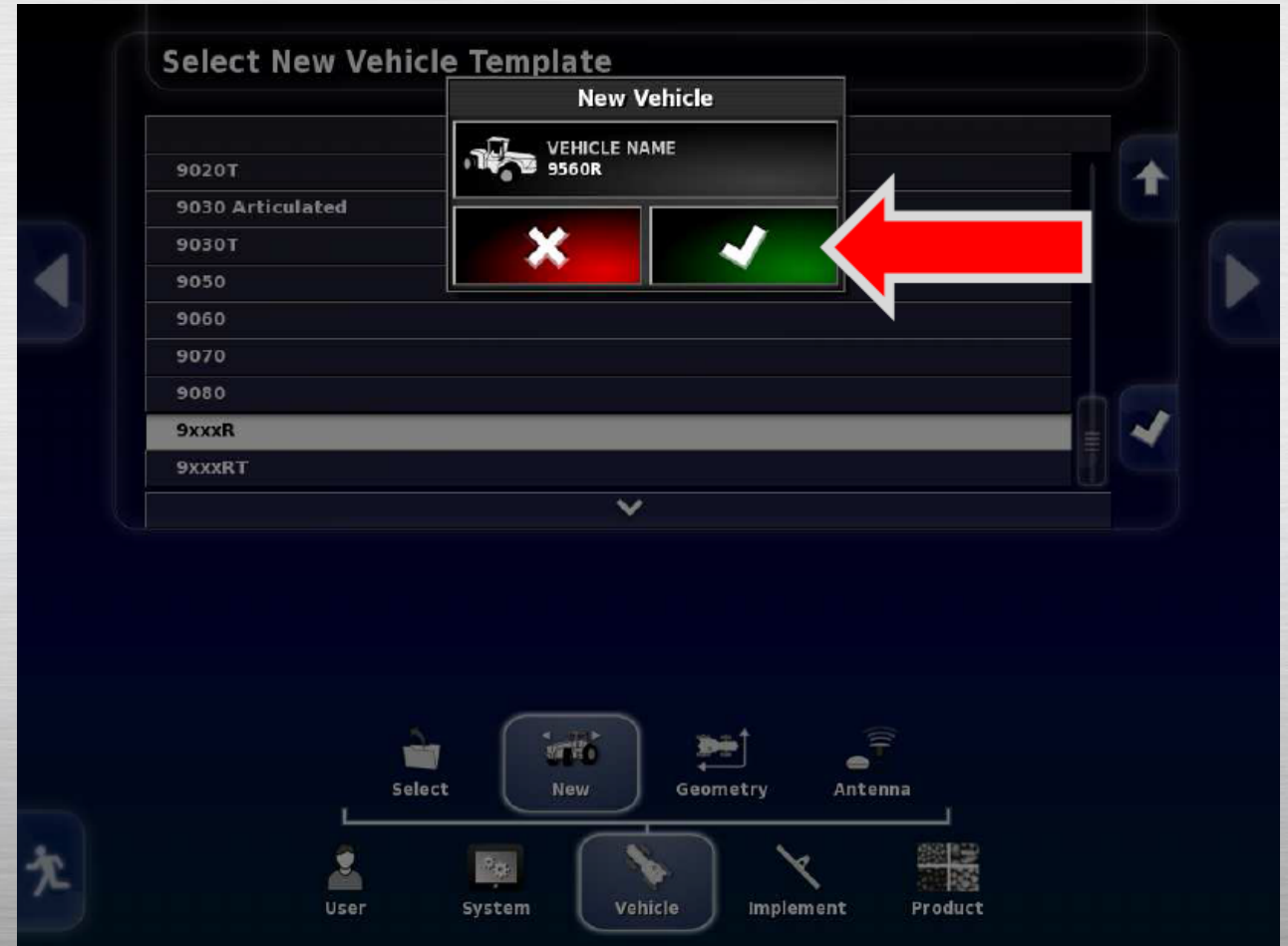
STEP 6

- STOP! Press within the **Vehicle Name** Tab.



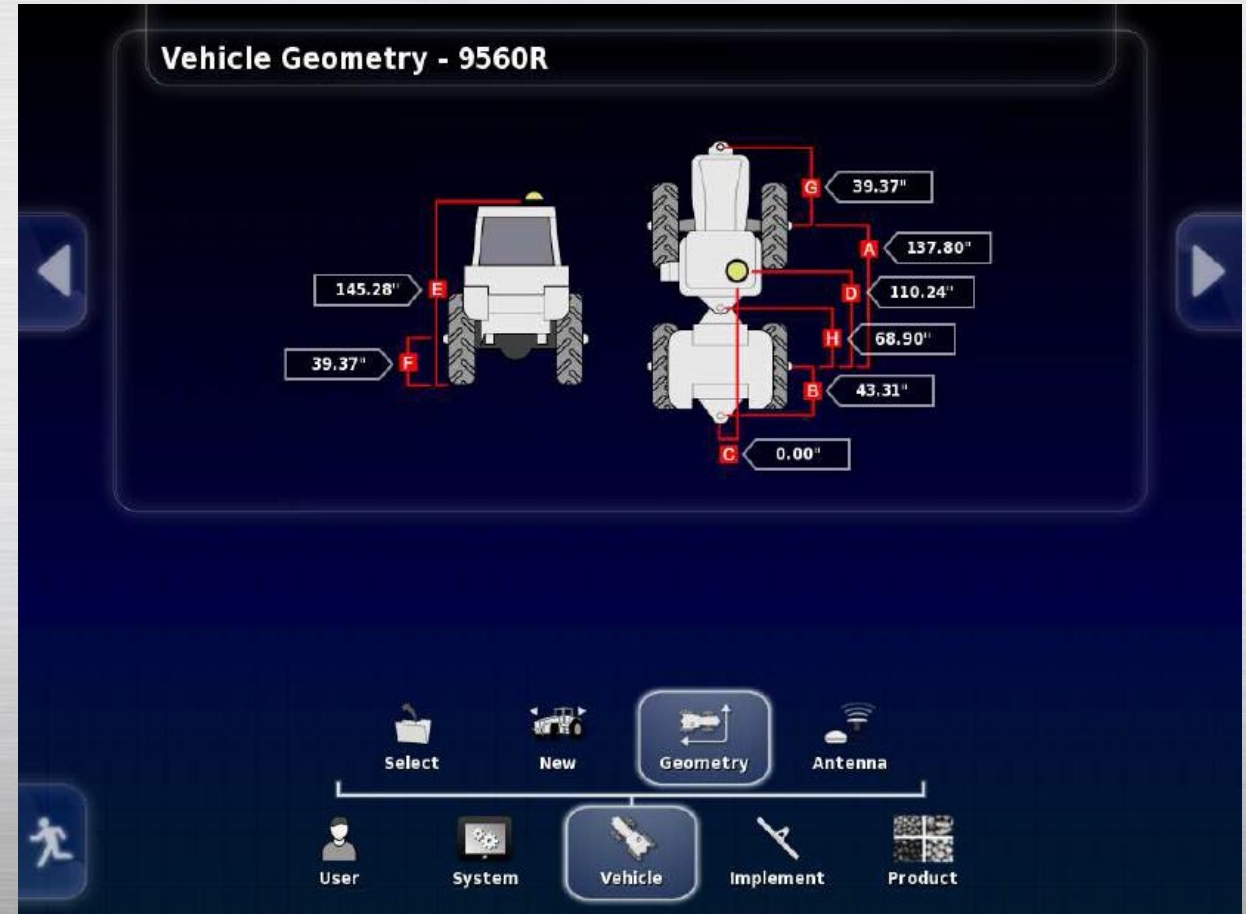
STEP 7

- Create a new **Vehicle Name** by entering your specific tractor model number. Apply with the Green Check mark.



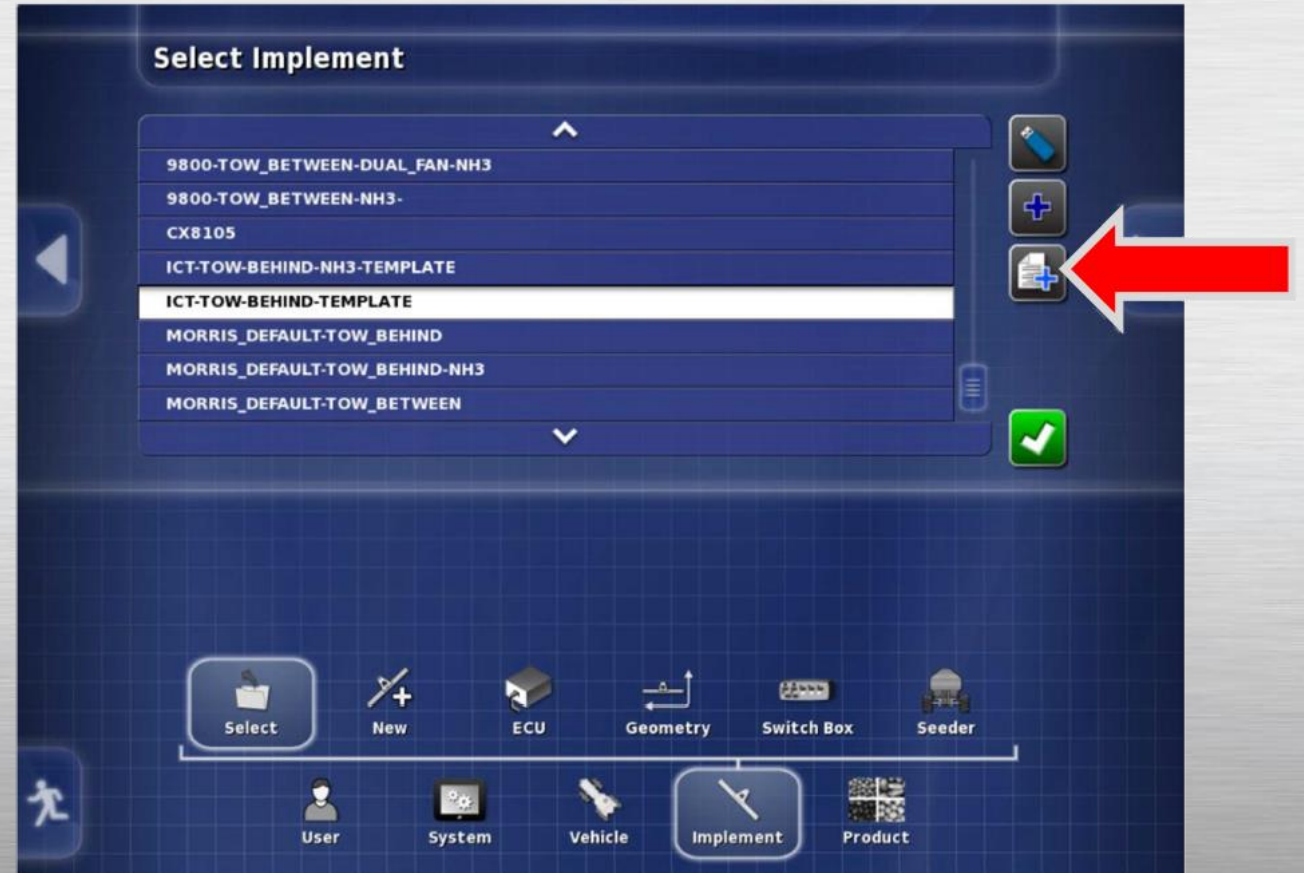
STEP 8

- Have a helper hold the tape measure. Check and enter the correct **Vehicle Geometry** dimensions.
- **NOTE:** Please be accurate as possible; The ICT Section timing is partially driven off of these dimensions. Incorrect dimensions will result in incorrect On/Off timing.



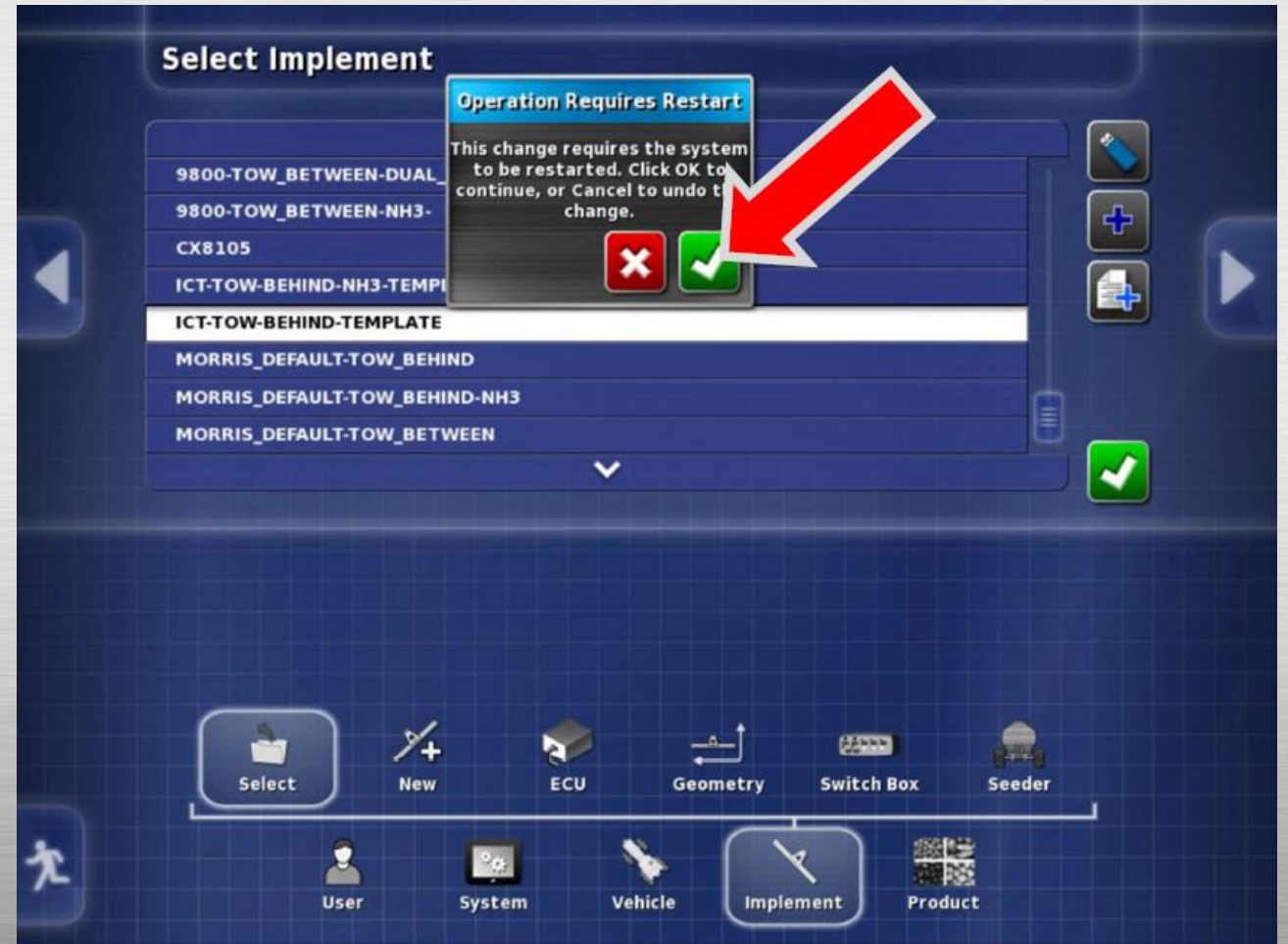
STEP 9

- Navigate from the bottom of the “Tree” Press: **Implement-Select**.
- Choose from any of the **ICT Profiles**; Press the **Create New Implement as Copy**.



STEP 10

- The system will give a notification that it will need to restart after the operation. Press the Green Check mark to Proceed.



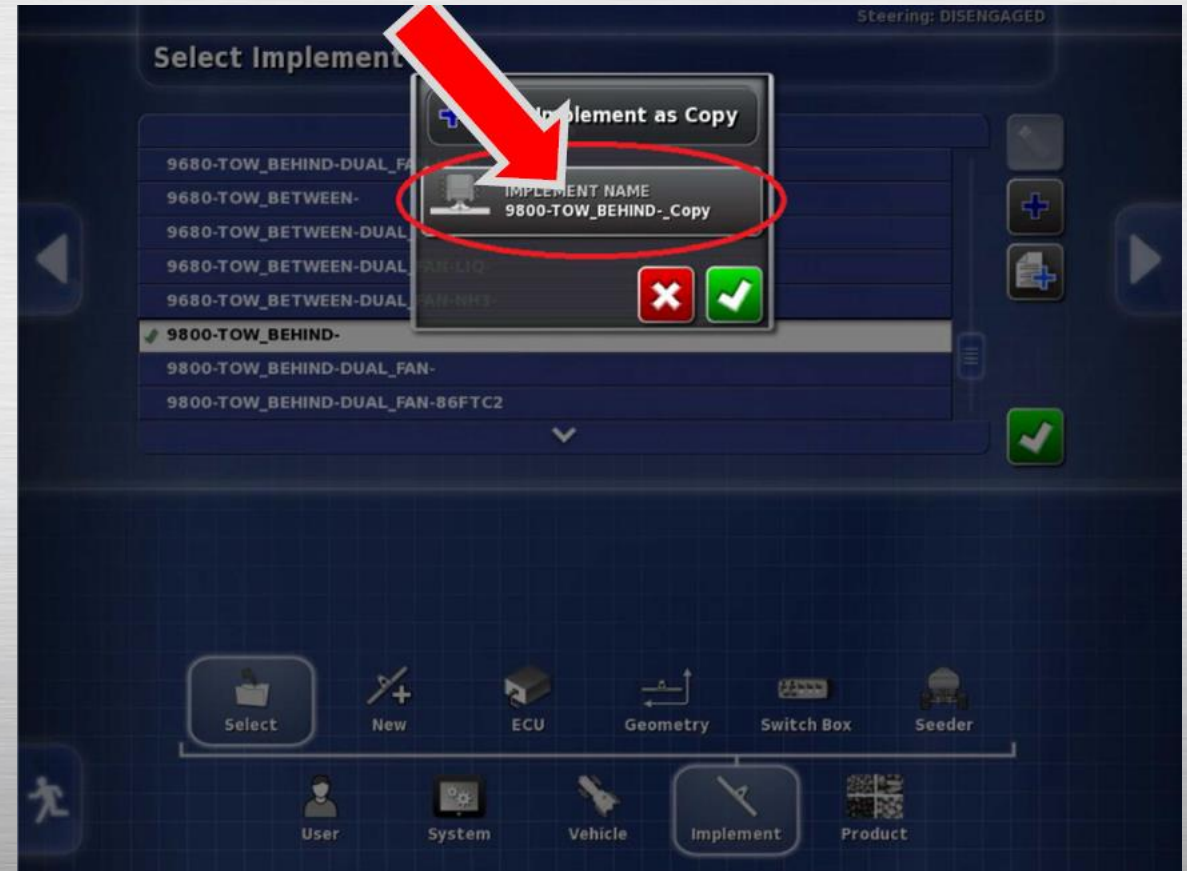
STEP 11

- **STOP! YOU MUST RENAME THE PROFILE BEFORE CONTINUING!**



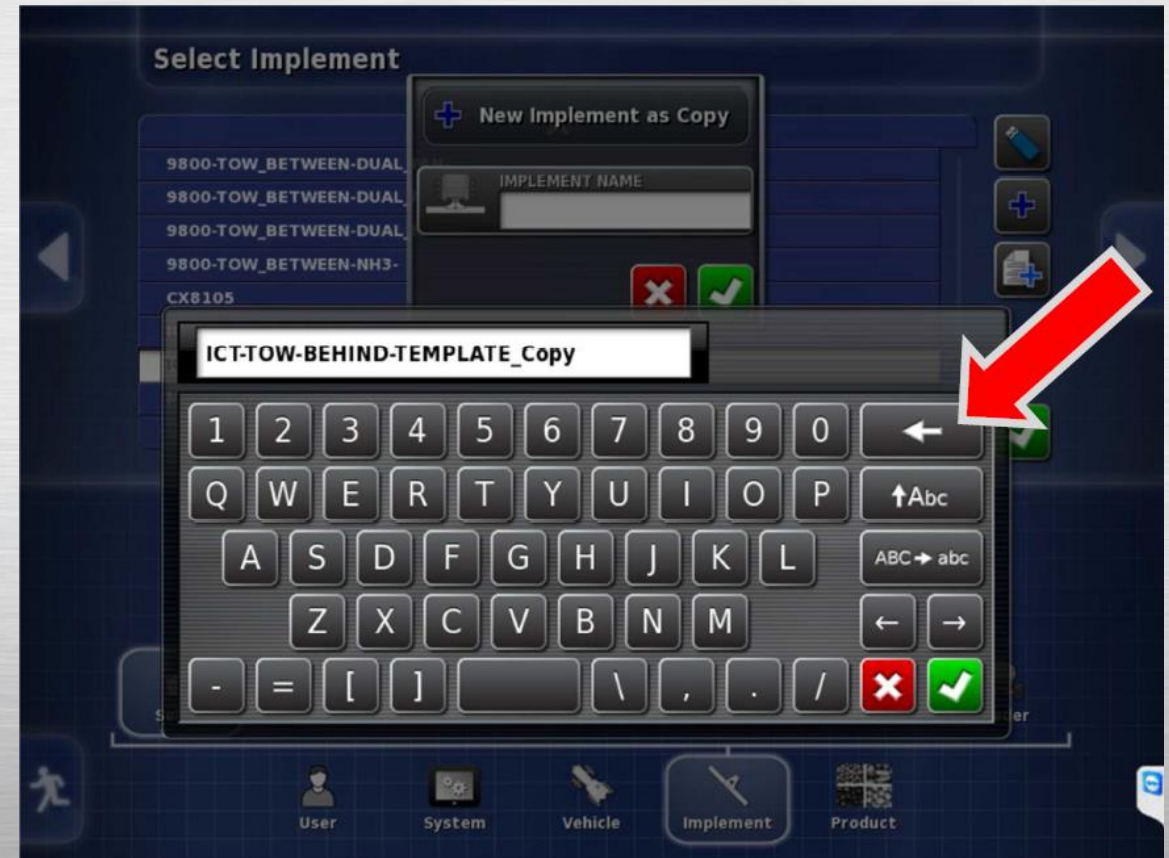
STEP 12

- Tap in the **Implement Name** window to rename the profile.



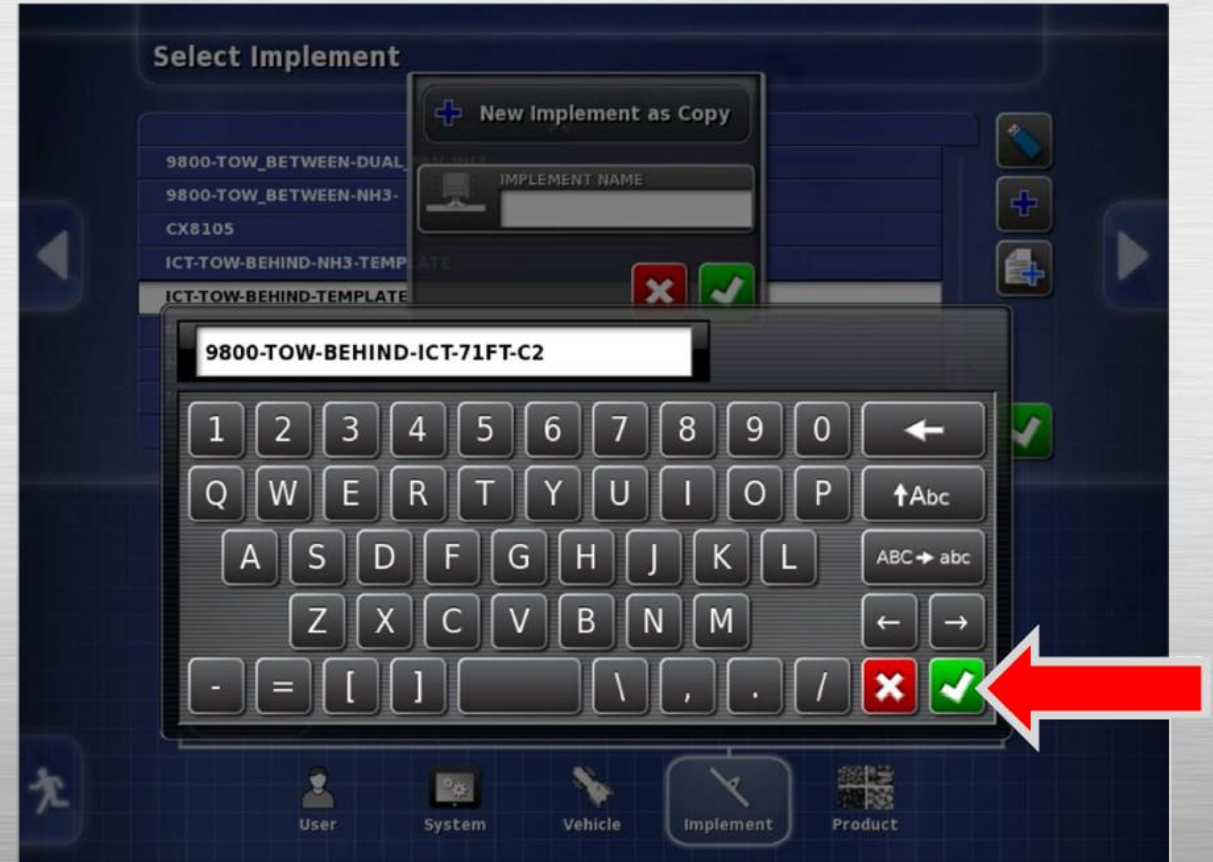
STEP 13

- Remove the **ICT-TEMPLATE** name by pressing the backspace key.



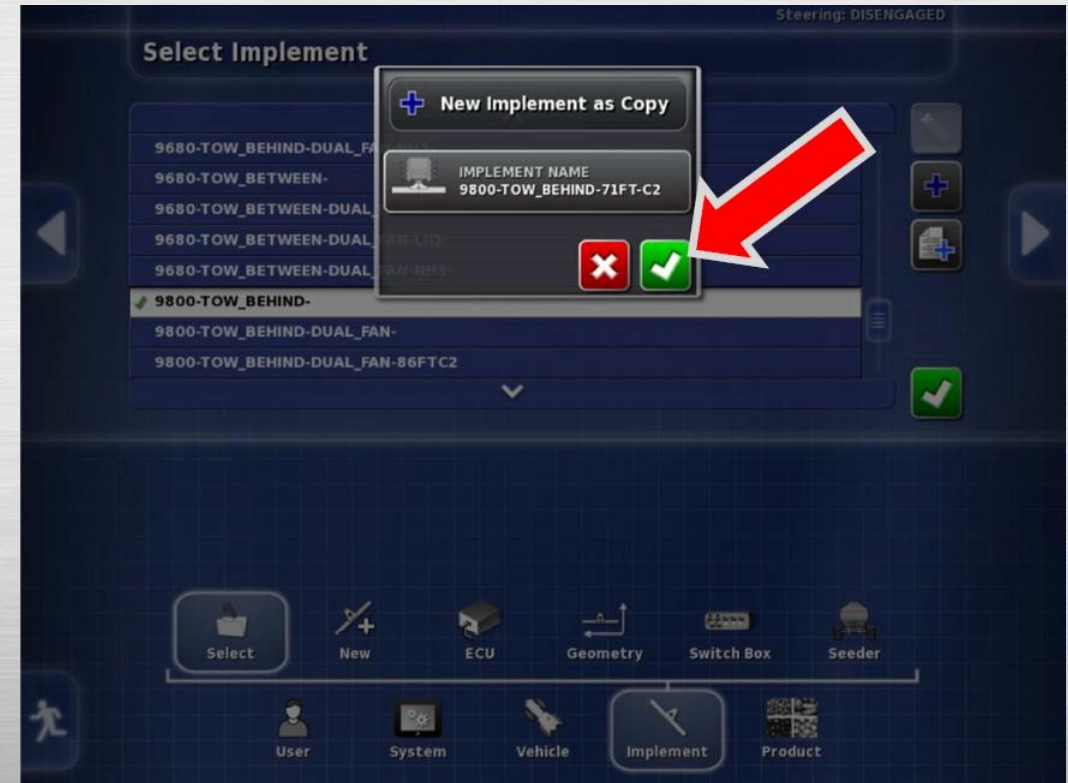
STEP 14

- Rename the profile by adding your **Aircart and Drill Information**.
- Example: **9800-TOW-BEHINDICT-71ft-C2**
- **Note:** Always uses – instead of the space bar. Never use /., * & or any other type of special characters at any time in the X30.



STEP 15

- Note: how the profile name now includes the drill width. Apply the Changes with the **Green Check** mark. The system will now restart.



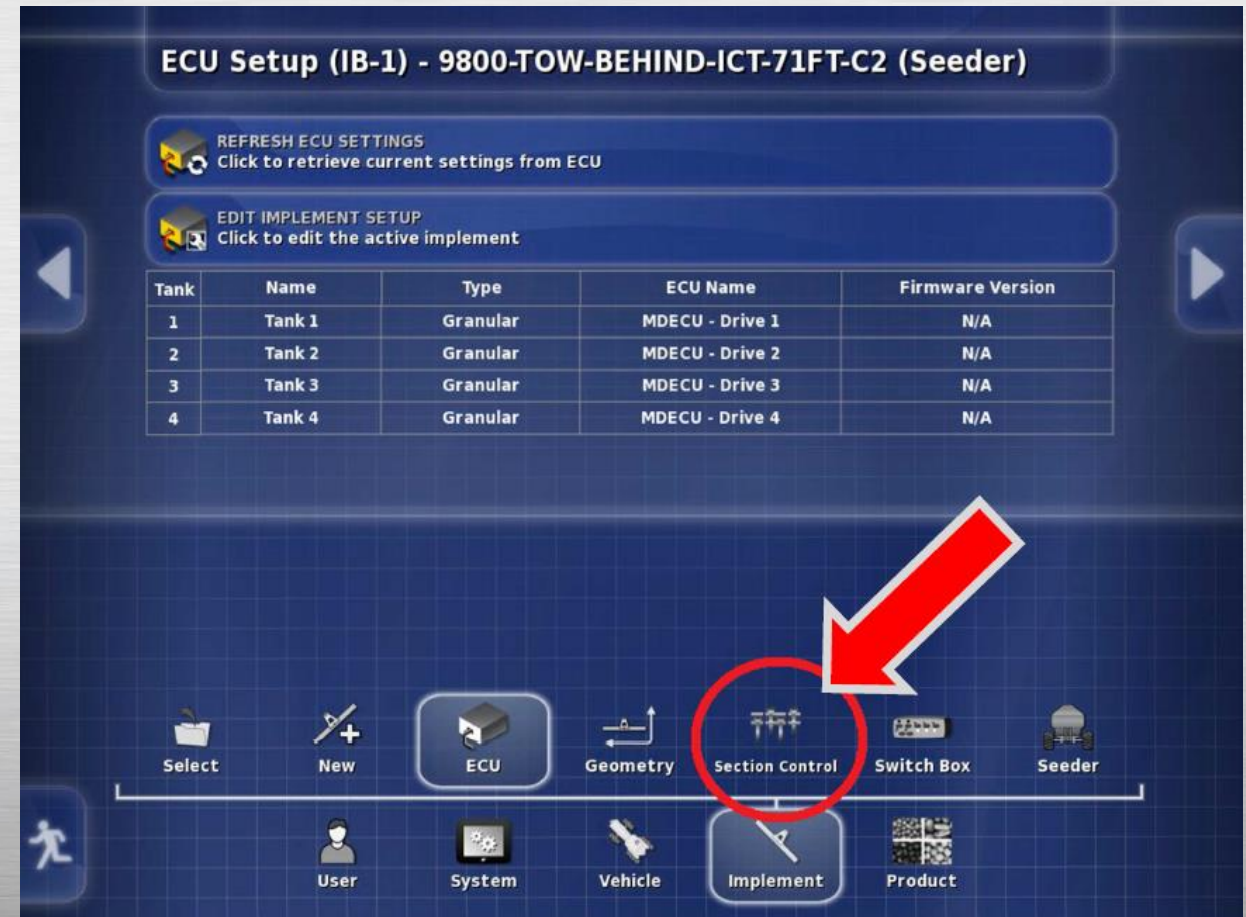
STEP 16

- The system is now restarting. The reason for copying the profile is so that the user will always have a backup of the original profile to fall back on. This is useful in case he encounters an error.



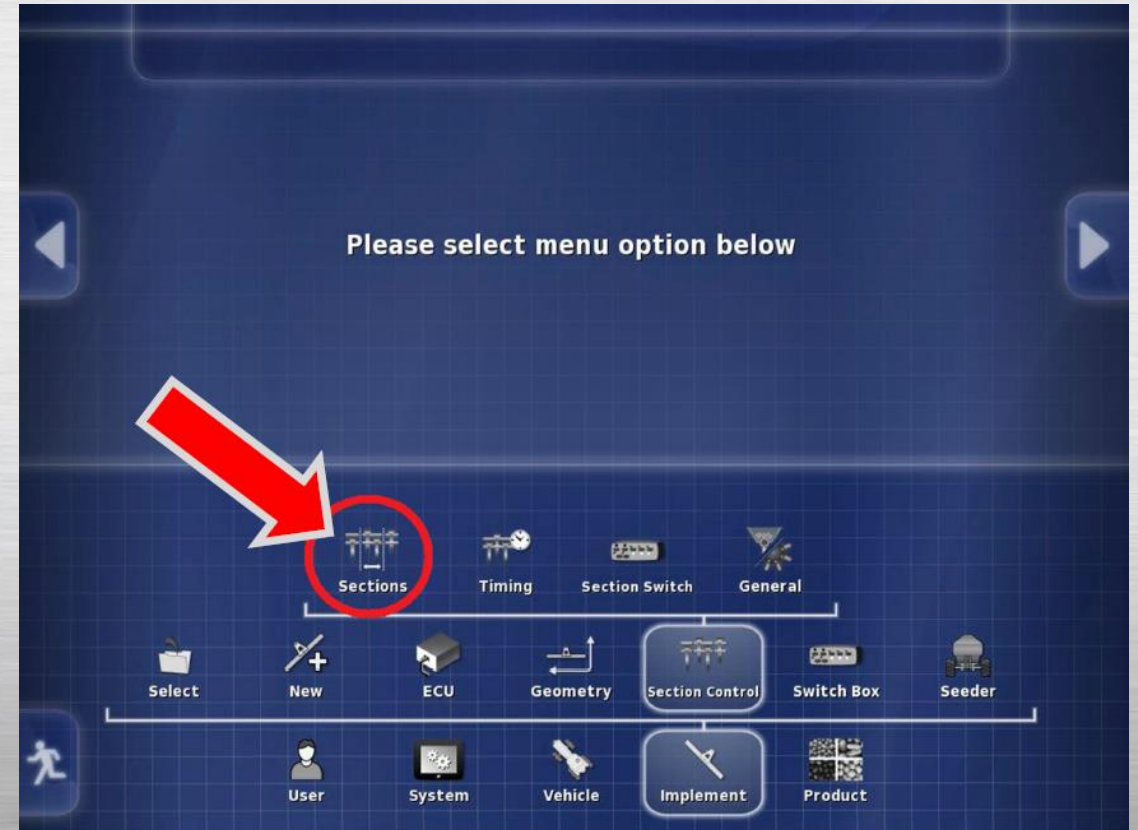
STEP 17

- Press the **Section Control** icon.



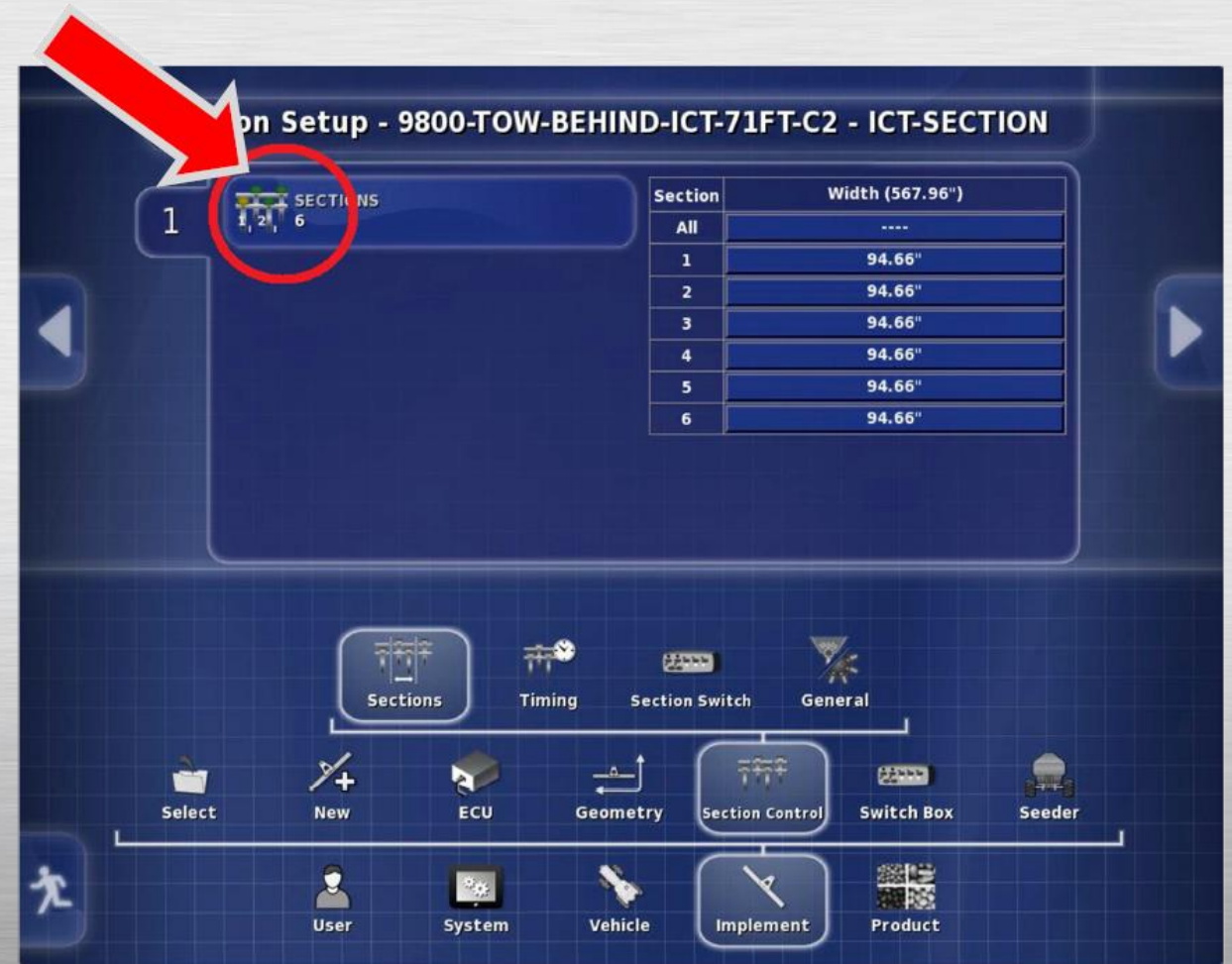
STEP 18

- Now press on the **Sections** icon.



STEP 19

- Adjust the number of **Granular sections** to suit your Aircart.



STEP 20

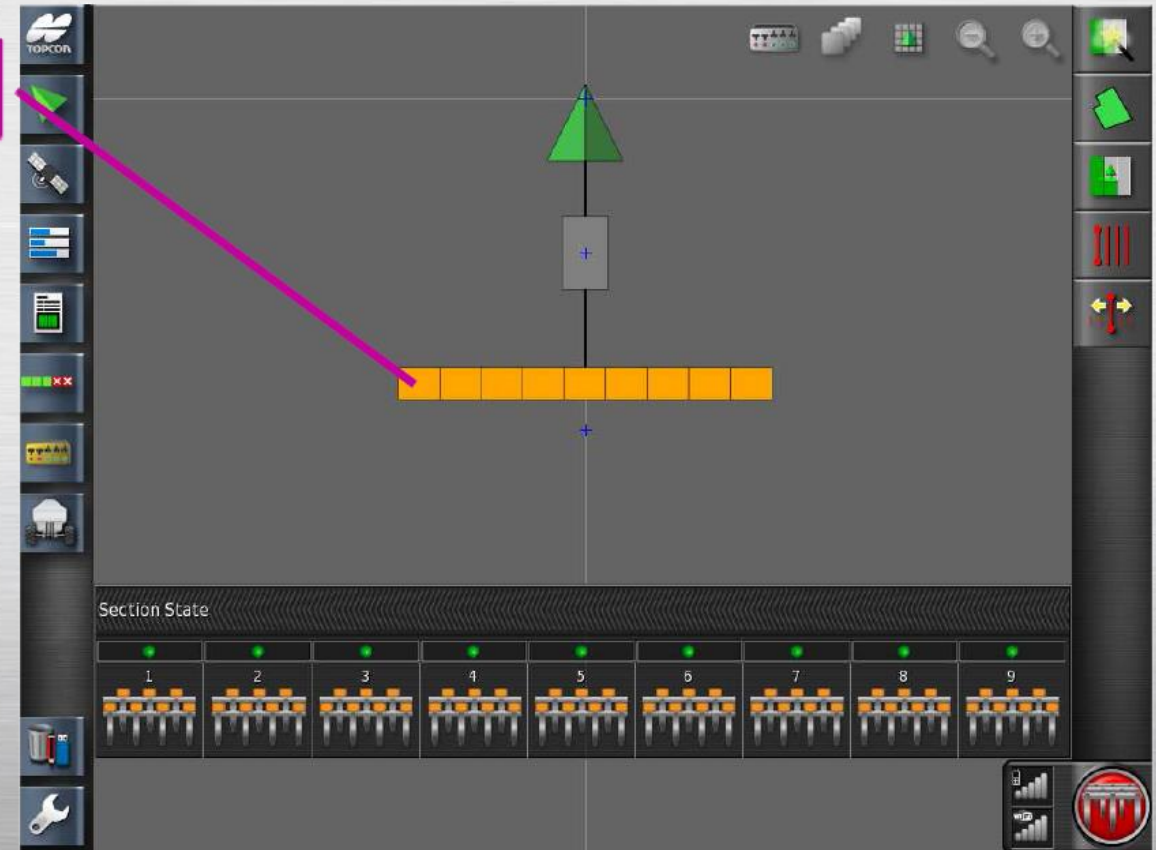
- Press the + or – to increase or decrease the number of sections. Apply with the Green check mark.



STEP 21

SECTION 1 (LEFT)

- Enter the correct width for each section. Depending on your drill the Sections will be either:
 - (#7)-84"
 - (#8)-96"
 - (#9)-108"
 - (#10)-120"



STEP 22

METER BODY LOOKING FROM THE REAR OF CART

12"	SEC 1 LEFT	SEC 2	SEC 3	SEC 4	SEC 5 MID	SEC 6	SEC 7	SEC 8	SEC 9 RIGHT
61'	8	8	7	7	BLANK	7	8	8	8
732"	96"	96"	84"	84"	0"	84"	96"	96"	96"
18.5928	2.4384	2.4384	2.1336	2.1336	0.0000	2.1336	2.4384	2.4384	2.4384
71'	8	8	8	8	7	8	8	8	8
852"	96"	96"	96"	96"	84"	96"	96"	96"	96"
21.6408	2.4384	2.4384	2.4384	2.4384	2.1336	2.4384	2.4384	2.4384	2.4384
86'	10	10	9	9	9	9	10	10	10
1032"	120"	120"	108"	108"	108"	108"	120"	120"	120"
26.2128	3.048	3.048	2.7432	2.7432	2.7432	2.7432	3.048	3.048	3.048
90'	10	10	10	10	10	10	10	10	10
1080"	120"	120"	120"	120"	120"	120"	120"	120"	120"
27.4320	3.048	3.048	3.048	3.048	3.048	3.048	3.048	3.048	3.048

STEP 22 CONT

10"	SEC 1 LEFT	SEC 2	SEC 3	SEC 4	SEC 5 MID	SEC 6	SEC 7	SEC 8	SEC 9 RIGHT
61'	8 80"	8 80"	8 80"	8 80"	8 80"	8 80"	8 80"	8 80"	8 80"
71'	10 100"	9 90"	9 90"	9 90"	9 90"	9 90"	9 90"	10 100"	10 100"

STEP 23

- Using the provided chart enter in the correct section width.
- **NOTE: HOW THE CENTER SECTION 5 USES A #7 METERING WHEEL, THE WIDTH IS SET AT 84".**

Section Setup - 9650TBW-ICT-71FT-C2 - ICT-SECTION

2 SECTIONS 9

Section	Width (852.00")	Select
All	9/9	✓
1	96.00"	✓
2	96.00"	✓
3	96.00"	✓
4	96.00"	✓
5	84.00"	✓
6	96.00"	✓
7	96.00"	✓
8	96.00"	✓
9	96.00"	✓

Navigation icons: Select, New, ECU, Geometry, Section Control, Operator Inputs, Seeder, Speed, User, System, Vehicle, Implement, Product.

Section Setup tabs: Sections, Timing, Section Switch, General.



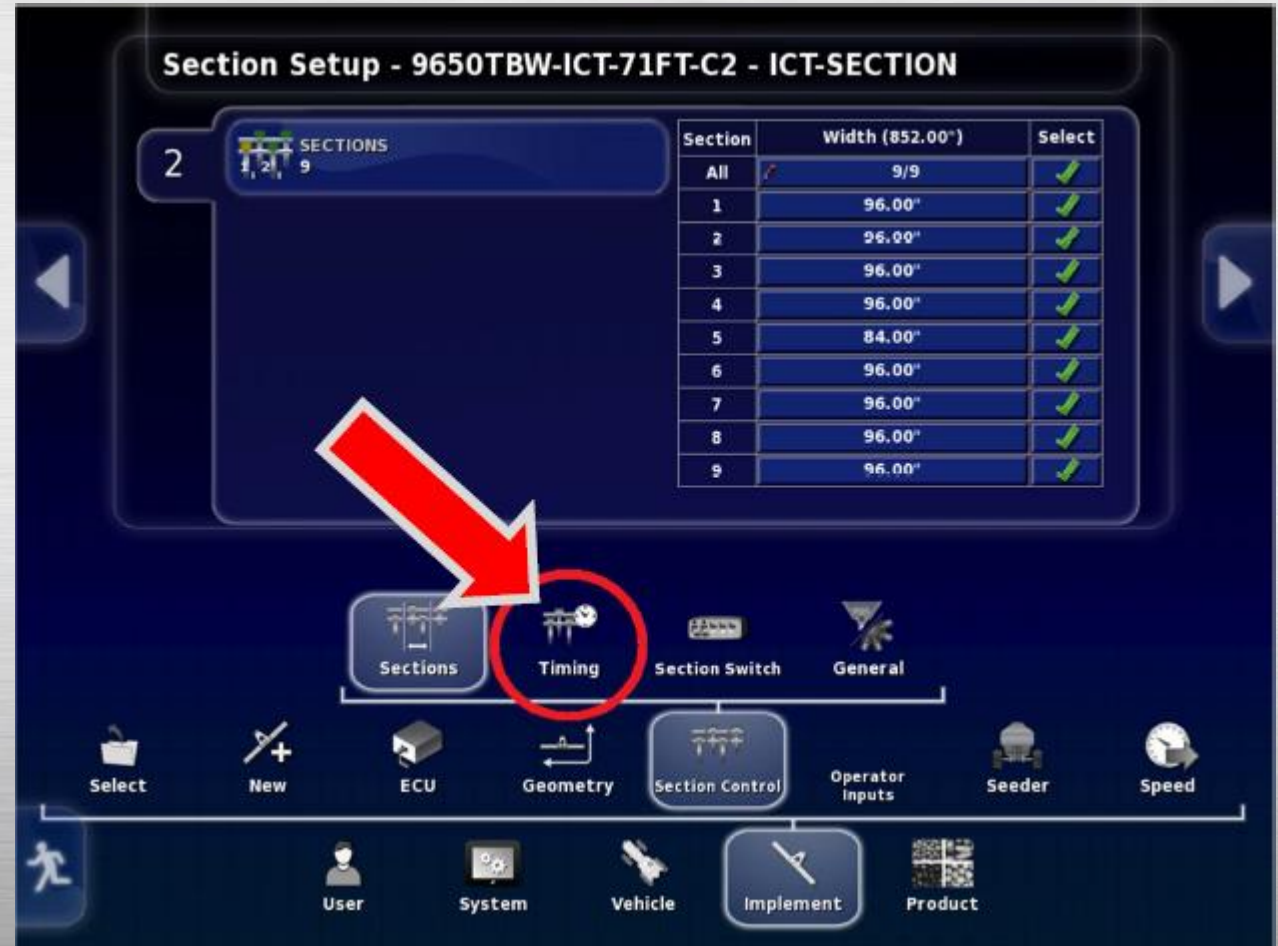
STEP 24

- Verify and ensure your **Width** matches your drill.
- Notice how the total width is equal to **852"**



STEP 25

- Press the **Timing** icon.



STEP 26

- Adjust the **On Time** and **Off Time**.

Controller Setup - 9650TBW-ICT-71FT-C2 - ICT-SECTION

2

Section	On Time	Off Time	Select
All	9/9	9/9	✓
1	6.0 s	4.0 s	✓
2	6.0 s	4.0 s	✓
3	6.0 s	4.0 s	✓
4	6.0 s	4.0 s	✓
5	6.0 s	4.0 s	✓
6	6.0 s	4.0 s	✓
7	6.0 s	4.0 s	✓
8	6.0 s	4.0 s	✓
9	6.0 s	4.0 s	✓

Navigation icons: Select, New, ECU, Geometry, Section Control, Operator Inputs, Seeder, Speed, User, System, Vehicle, Implement, Product.

STEP 26 CONT

- These values dictate when the monitor will turn the metering system On and Off. An adjustment to compensate for the lag time for the seed /product to leave the metering wheel and travel through the airstream and arrive at the openers.
- Each wing section time can be adjusted independently to apply product evenly. This is very useful feature on the larger size drills.
- **NOTE: THE TIME VALUES ADJUST ALL OF TANKS SIMULTANEOUSLY INDIVIDUAL TANK TIMING IS NOT OPTION, THEREFORE THE TANK WHICH IS THE FURTHEST AWAY FROM THE DRILL IS USED DURING THE TIMING SETUP EXERCISE.**

STEP 26 CONT

- Adjust these values to “dial in” the optimal balance between On and OFF times. The numbers should be adjusted for different size drills, your seeding ground speed and product type are all also a contributing factor. See testing section for further information.

STEP 27

- Virtual Section Switchbox – **Enabled**



STEP 28

- Match the number of Virtual Sections Switches to the number of ICT sections.



STEP 28 CONT

- The virtual section switchbox control is very useful for testing purposes. Prior to seeding it is recommended to preform a daily systems check to verify that each section is functioning correctly.
- Each section can be toggled **On** and **Off** independently by pressing the onscreen switches.



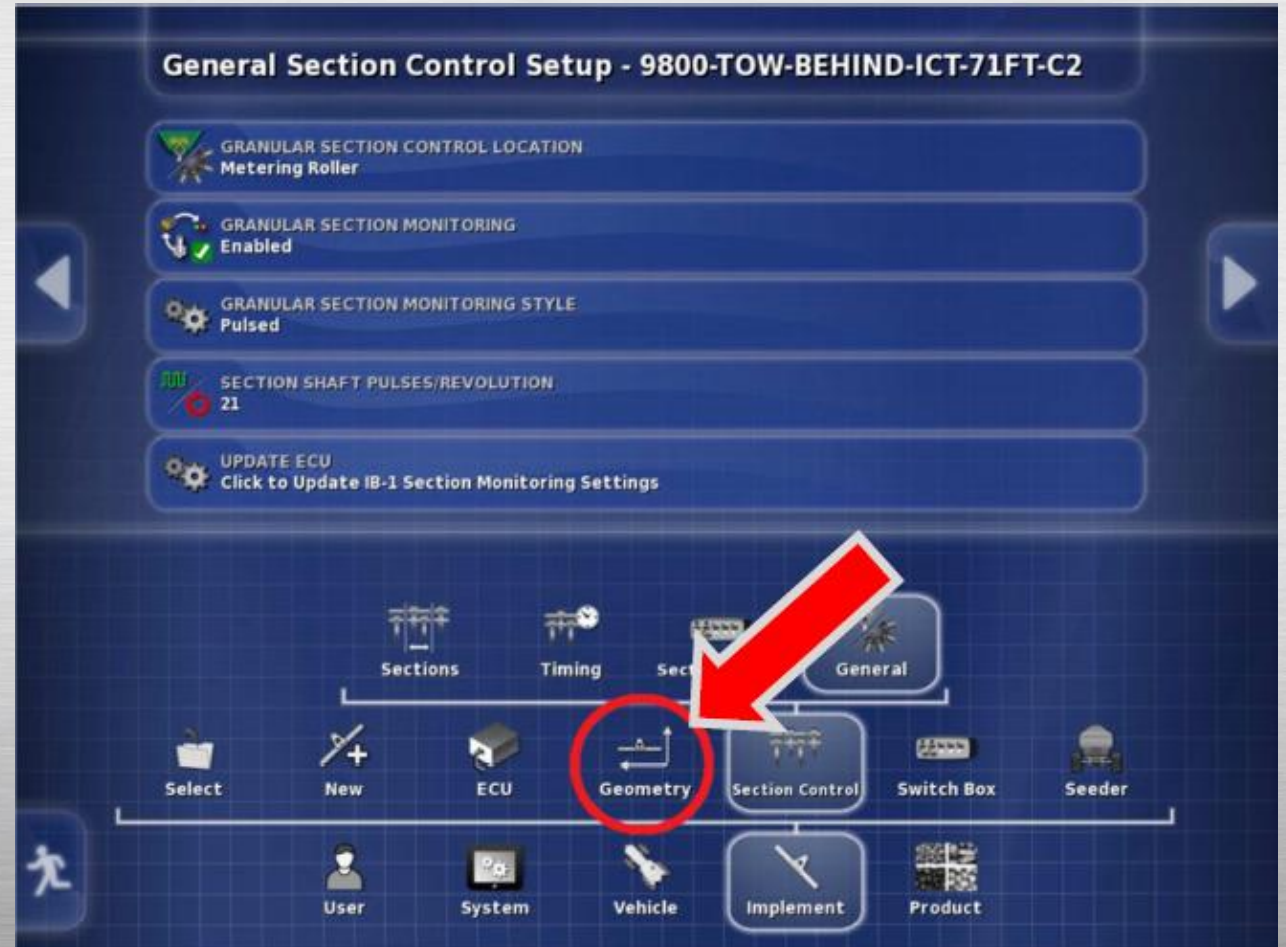
STEP 29

- General Section Control Setup use the following settings:
- GRANULAR SECTION CONTROL LOCATION
 - **METERING ROLLER (WARNING ENSURE METERING ROLLER IS SELECTED!!! THIS IS VERY IMPORTANT!)**
- GRANULAR SECTION MONITORING
 - **ENABLED /DISABLED**
- GRANULAR SECTION MONITORING STYLE
 - **PULSED**
- SECTION SHAFT PULSES/REVOLUTION
 - **21**



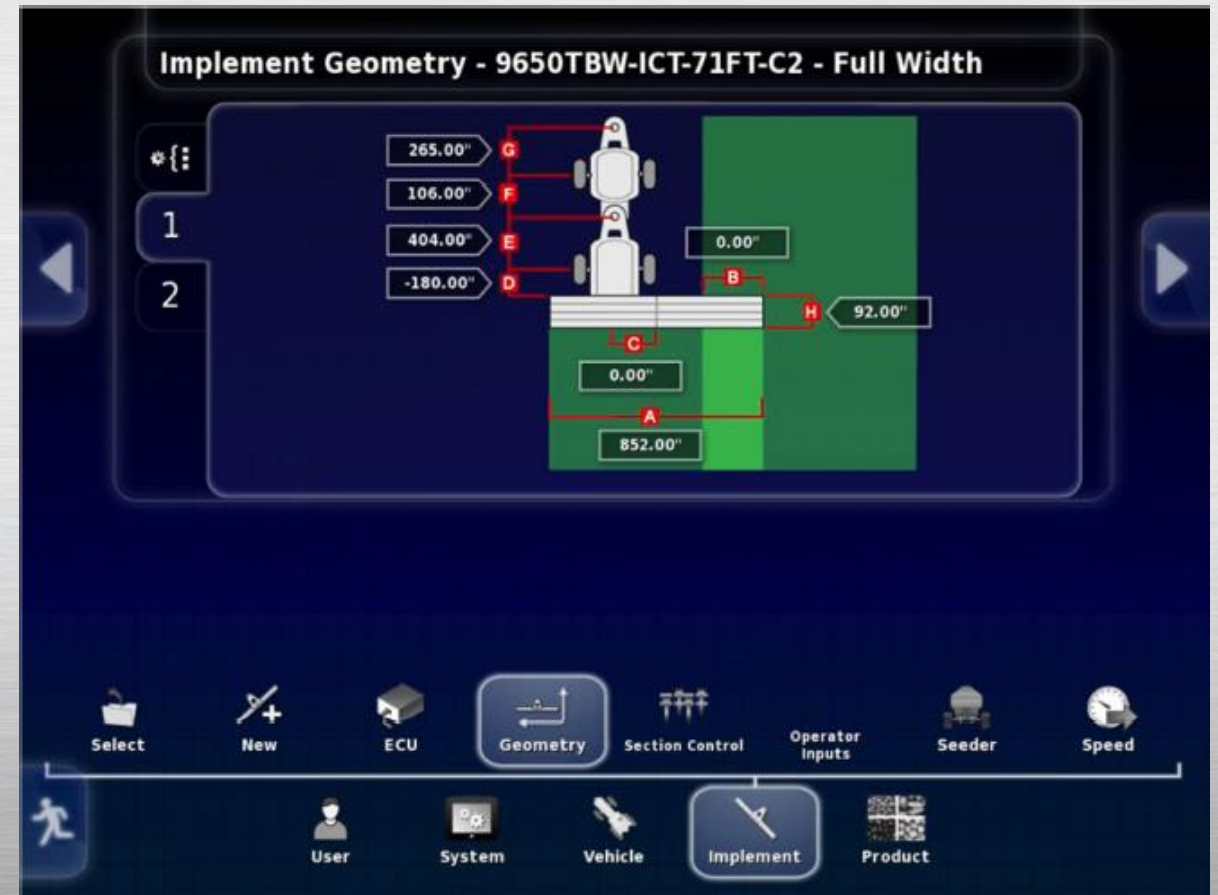
STEP 30

- Move onto the **Geometry** Icon.



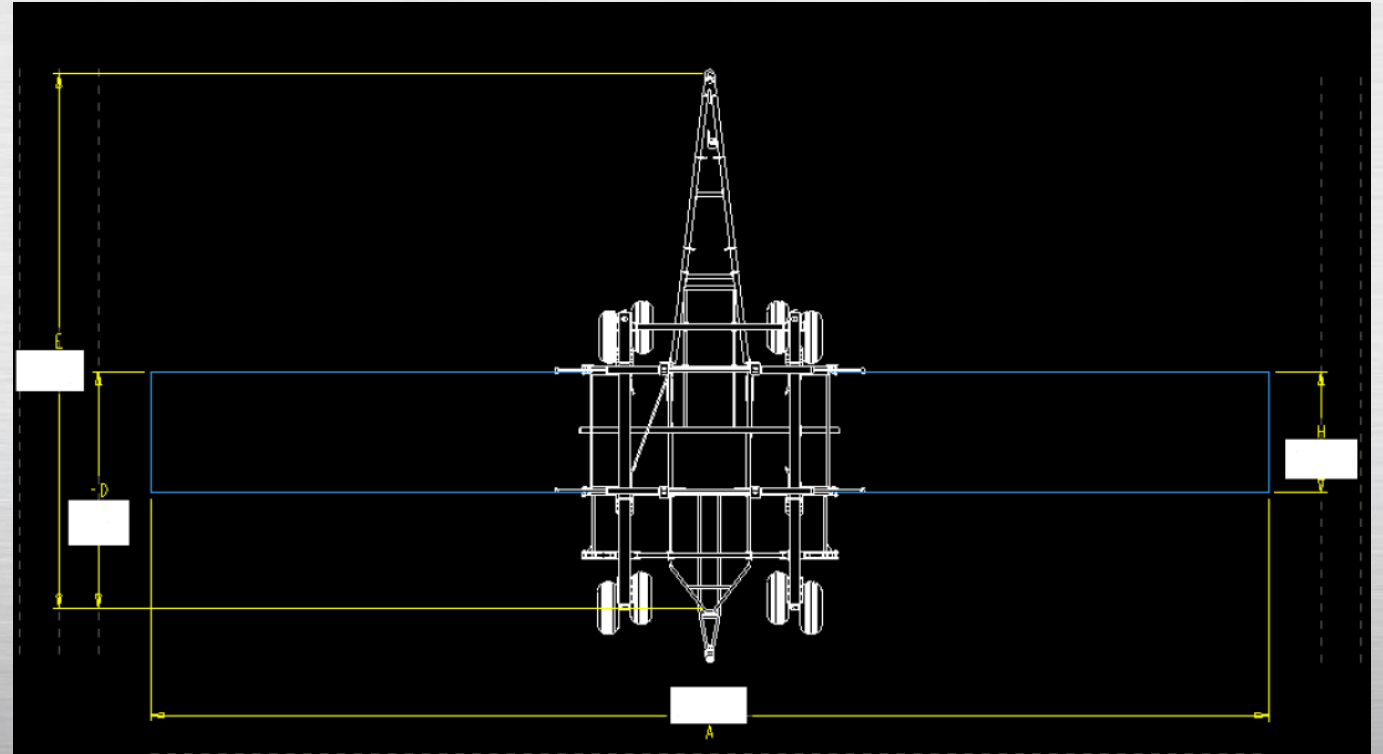
STEP 31

- **Implement – Geometry.** Adjust the *Full Width Geometry* to match your drill.
- Our example is a **71ft C2**.



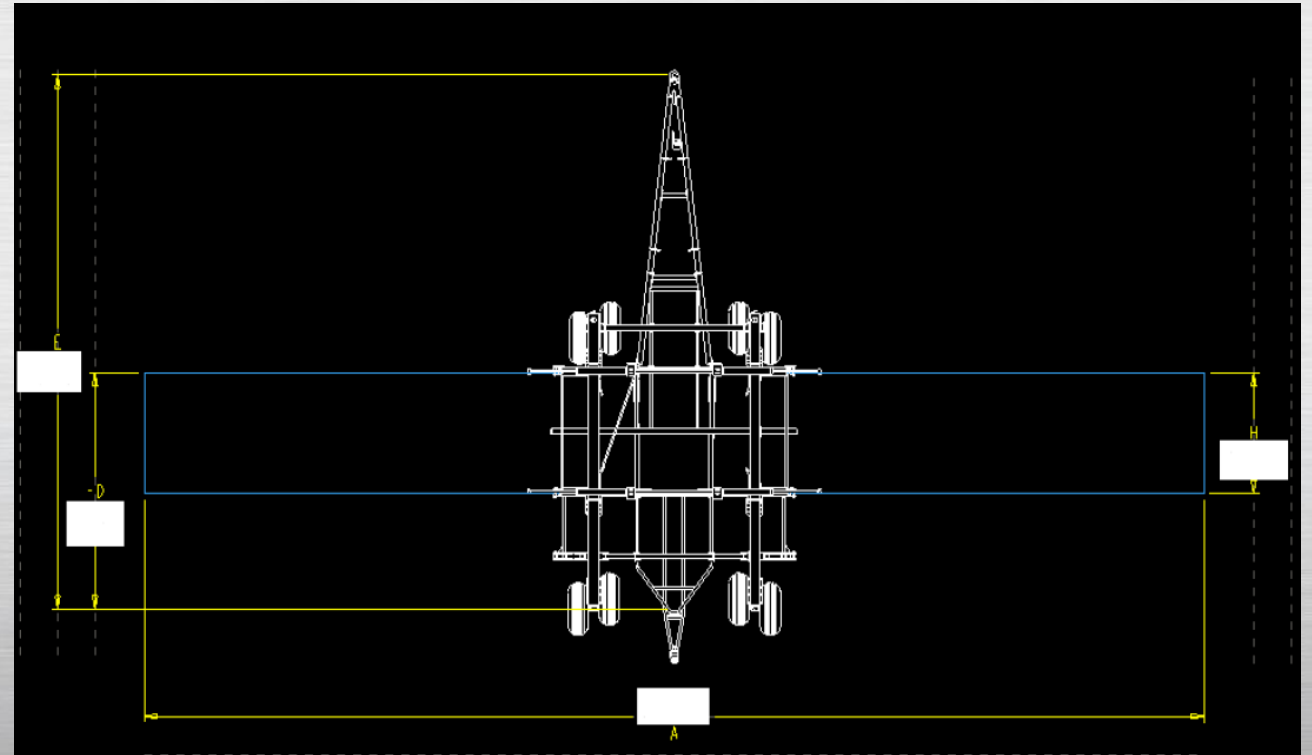
STEP 32

- Adjust the **Geometry** to match your drill. **Note:** The implement on the monitor is a tow behind drill. However the diagram does not accurately represent our drill. Measure and fill in the dimension using the above template.



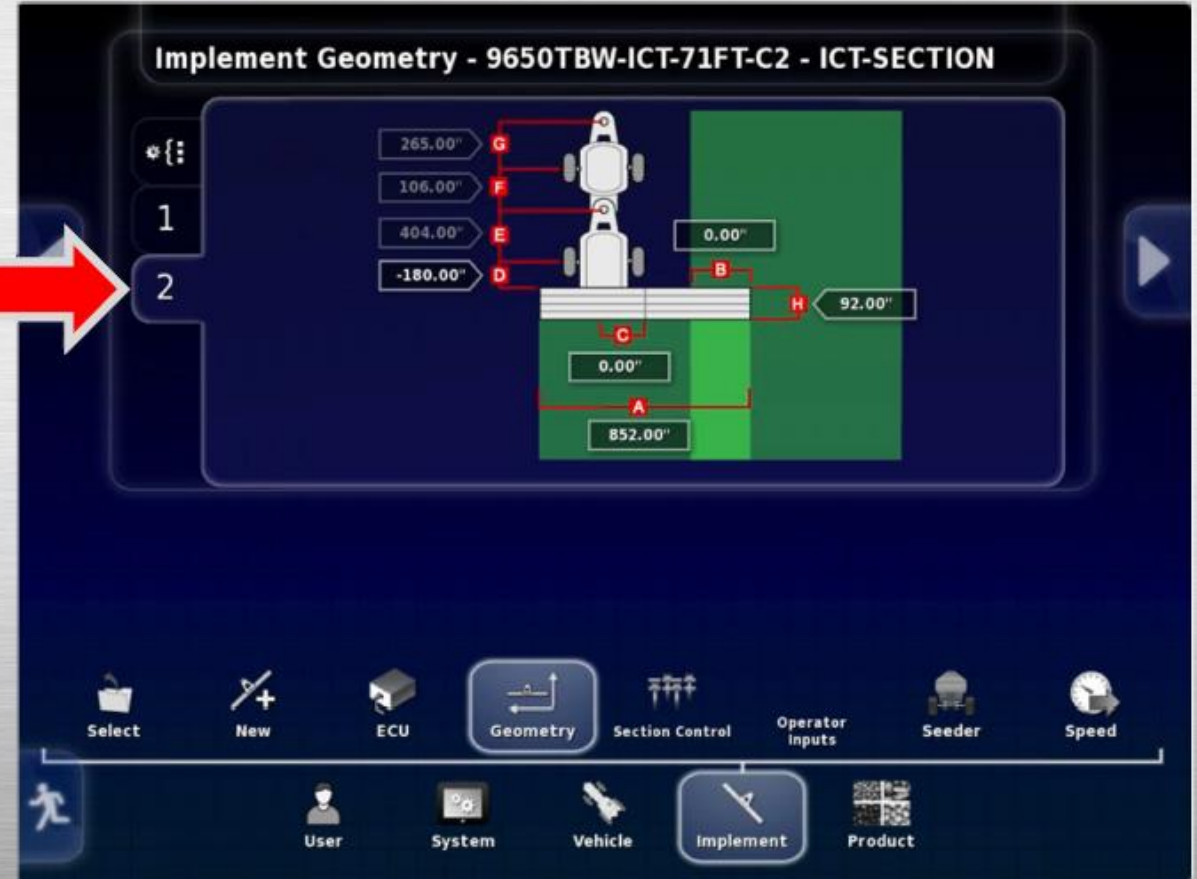
STEP 32

- A = Implement Working Width
(**VALUE IS AUTOMATICALLY ENTERED FROM SECTION SETUP**)
- B = 0.00
- C = 0.00
- D = (**NEGATIVE VALUE**) REAR AXLE TO FRONT OPENER
- E = FRONT HITCH TO REAR AXLE
- H = FRONT OPENER TO REAR OPENER.



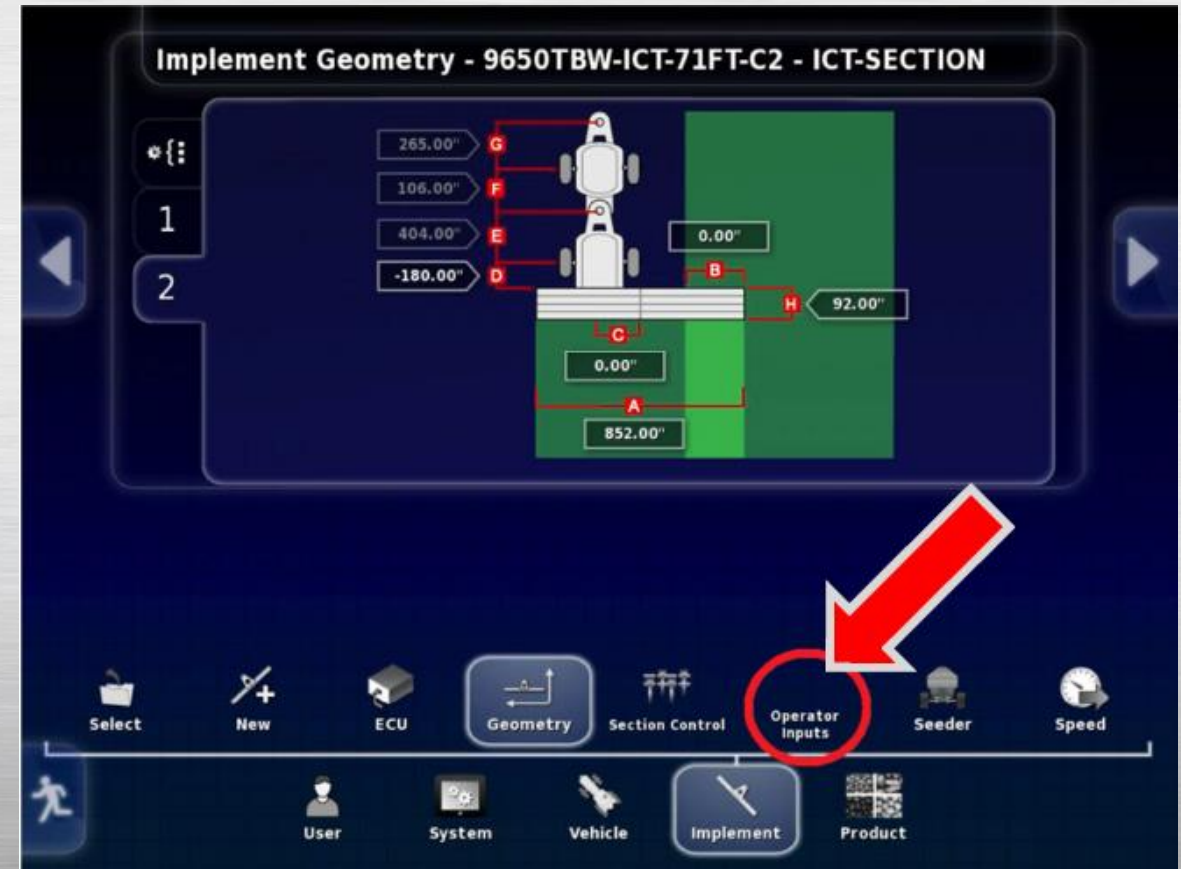
STEP 33

- Press on the **#2 Tab**; enter the same values into the available areas in the **ICT-SECTION Geometry** diagram.



STEP 34

- Press the **OPERATOR INPUTS** Icon.



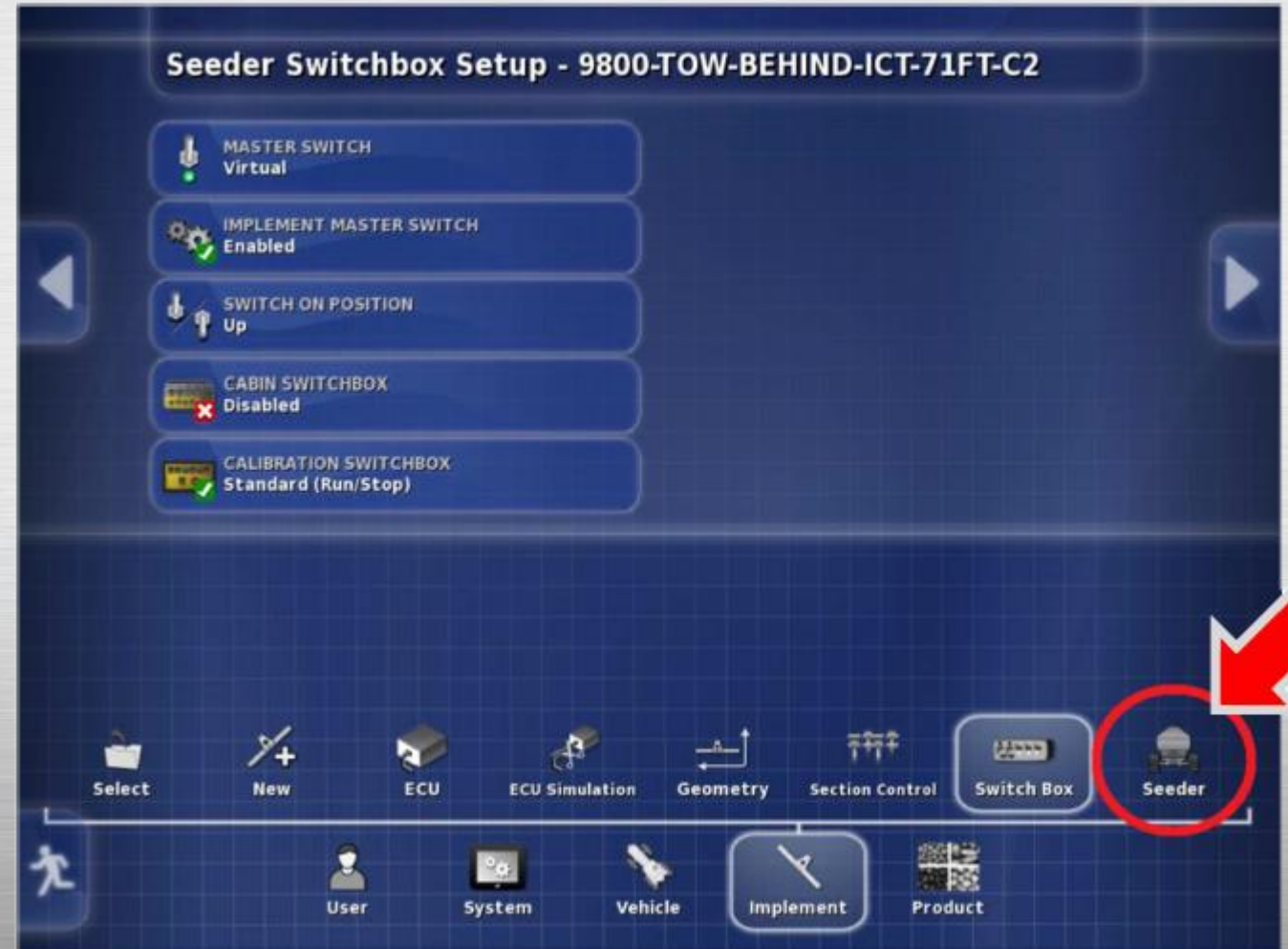
STEP 35

- Enable the Implement Master Switch.



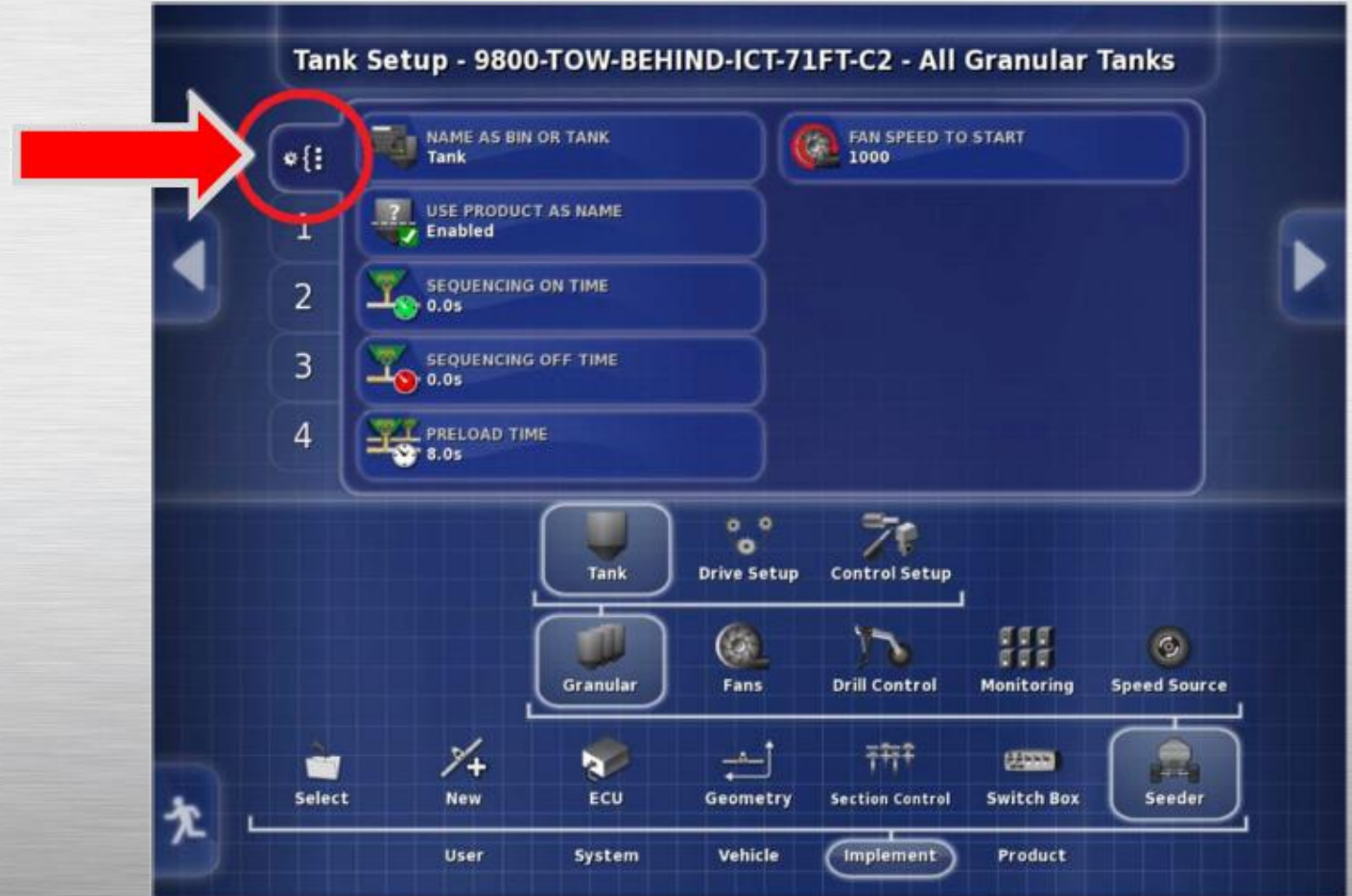
STEP 36

- Select the **Seeder** icon.



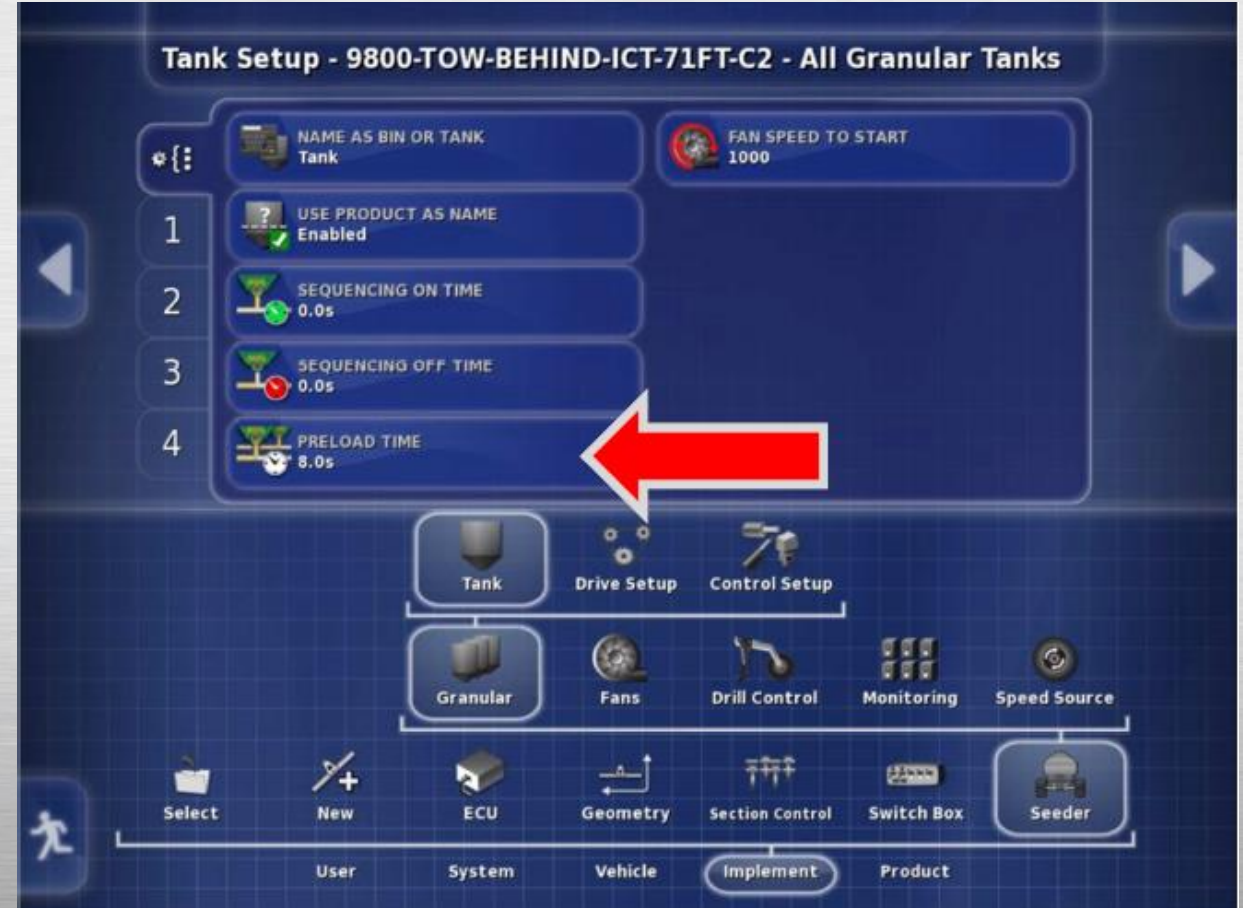
STEP 37

- Move up the tree and Select **Granular -Tank - All Granular tanks**



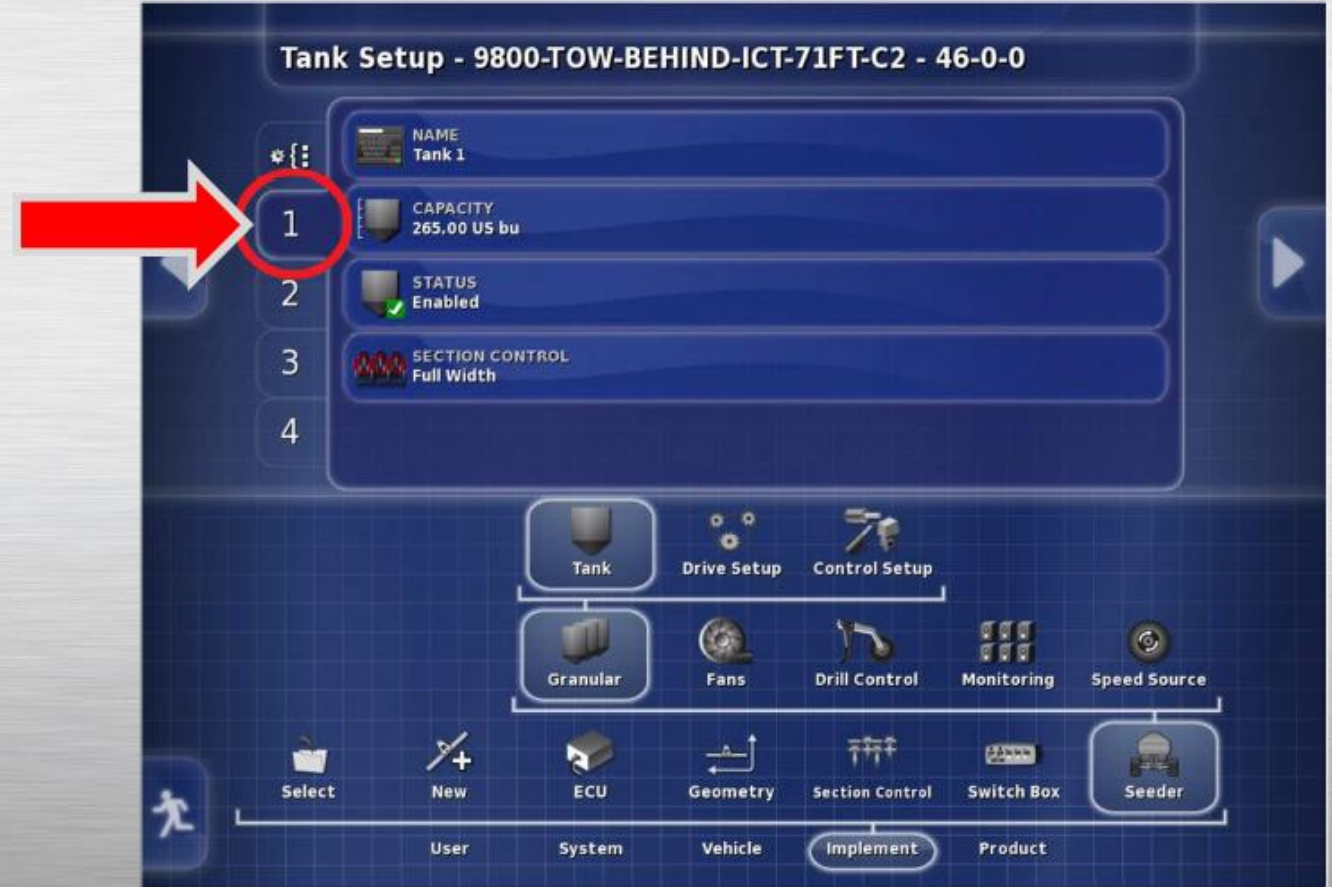
STEP 38

- Adjust the **Preload time** to **8.0s**.
- ***Sequencing On and Off time** are not used on this page (ICT equipped carts).



STEP 39

- Select the **#1 Tank Tab**.



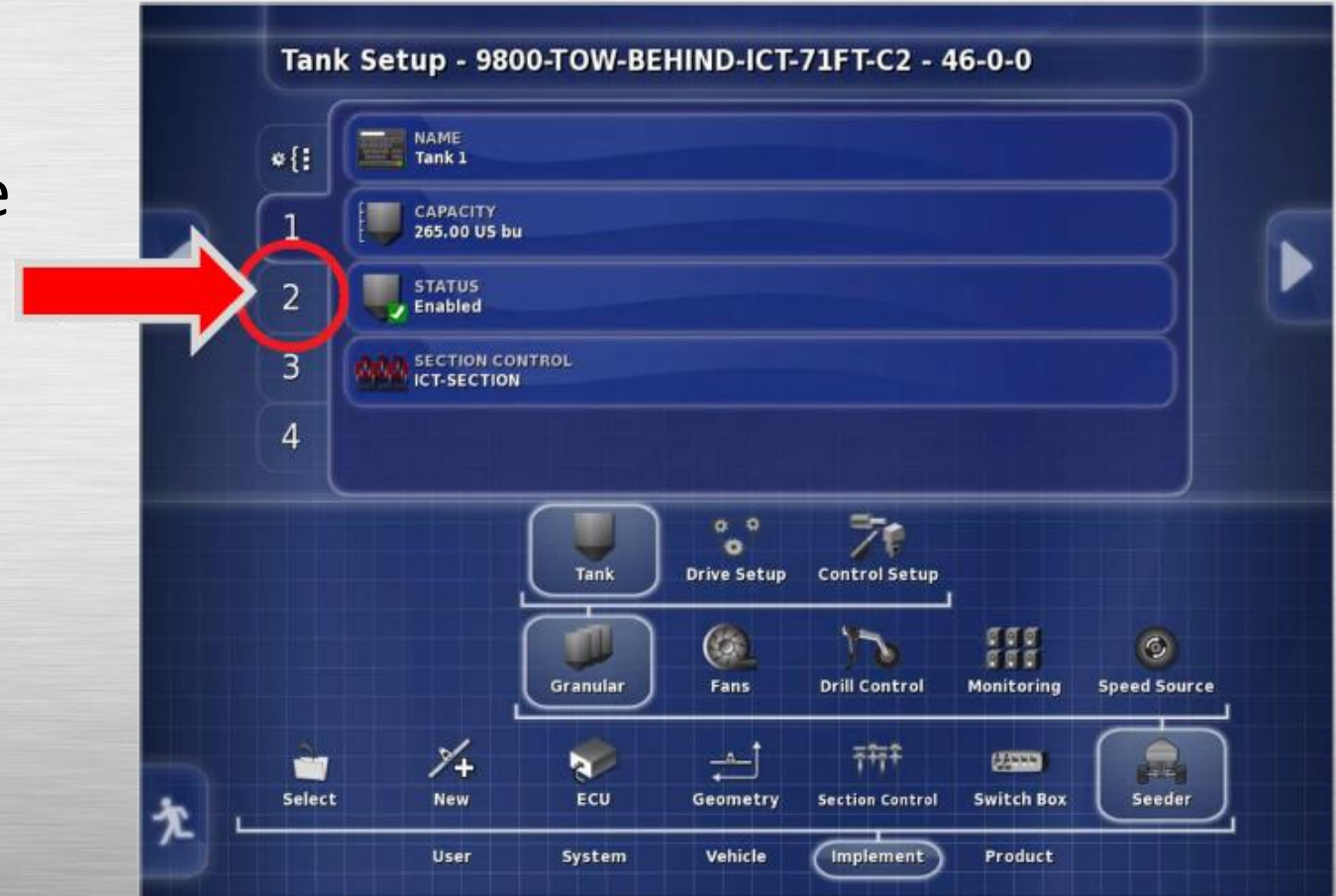
STEP 40

- Change **Full Width** to **ICT-SECTION**; apply with the Green Check mark.



STEP 41

- Repeat the above procedure and change **Full Width** to **ICT-SECTION** on Tabs # 2, 3 and 4.



STEP 42

- Press the Drive Setup icon.



STEP 43

- Verify the following settings are in place. On Tabs 1-4
- **NOTE: ICT AIRCARTS USE 12 Pulses /Revolution**



STEP 44

- Press the **Running man** icon to **Exit** back to the home screen.



