



X30 MONITOR TRAINING

ICT Module 2 : Global Home Setup

STEP 1

- The **Seeder Controller** must be fully expanded. Hide any of the mini windows by pressing the small **Left Arrows**.



STEP 2

- Press the **Guidance Icon** to bring up the mini view **Guidance window**.



STEP 3

- Toggle to the **North up map view** (DIAMOND SHAPE).



STEP 4

- Press the **Select Visible Map Layers** Icon.



STEP 5

- Coverage Map Type;
Coverage (ICT-SECTION)



STEP 6

- Press the **Auto Section Control Configuration** Icon.



STEP 7

- The mini **Auto Section Control** will appear.



STEP 8

- Customize the **Dash Board** by simply tapping on the bottom row of icons.
- **ENABLE THE FOLLOWING:**
 - Fan Speed
 - 1:
 - 2:
 - 3:
 - 4:
 - Speed
 - Heading / Area Covered



STEP 9

- While the **Customize Dashboard** option is open, by tapping the Dashboard again within the **Tank 1 Zone** will allow for further customization. Notice how the **Select Data** window is now visible.



STEP 10

- Adjust the **Select Data** to include: **Motor Load**, and **Area Remaining**. Apply your changes with the green check mark.



STEP 11

- Match the parameters in the Tank 2, 3, 4 Zones.



STEP 12

- Touch the on the **Compass Heading** icon.



STEP 13

- Ensure **Heading** and **Area Covered** is highlighted. Apply with the Green Check mark on both menus.



STEP 14

- Touch on the Tank information.



STEP 15

- Adjust Tank information to include **Application Rate** and **Weight Remaining**.



STEP 16

- Toggle the **Fan Icon ON**.



STEP 17

- Notice how the Dashboard now has the updated layout. Ensure your screen parameters match this layout.



STEP 18

- We will now lock the screen settings by saving a **Global Home Screen**. Simply press and **HOLD** the **Yellow Topcon Logo** **FIRMLY** for 5 seconds.
- If you have a **White Topcon logo**. Simply press and **HOLD** on the touch screen directly above the logo.



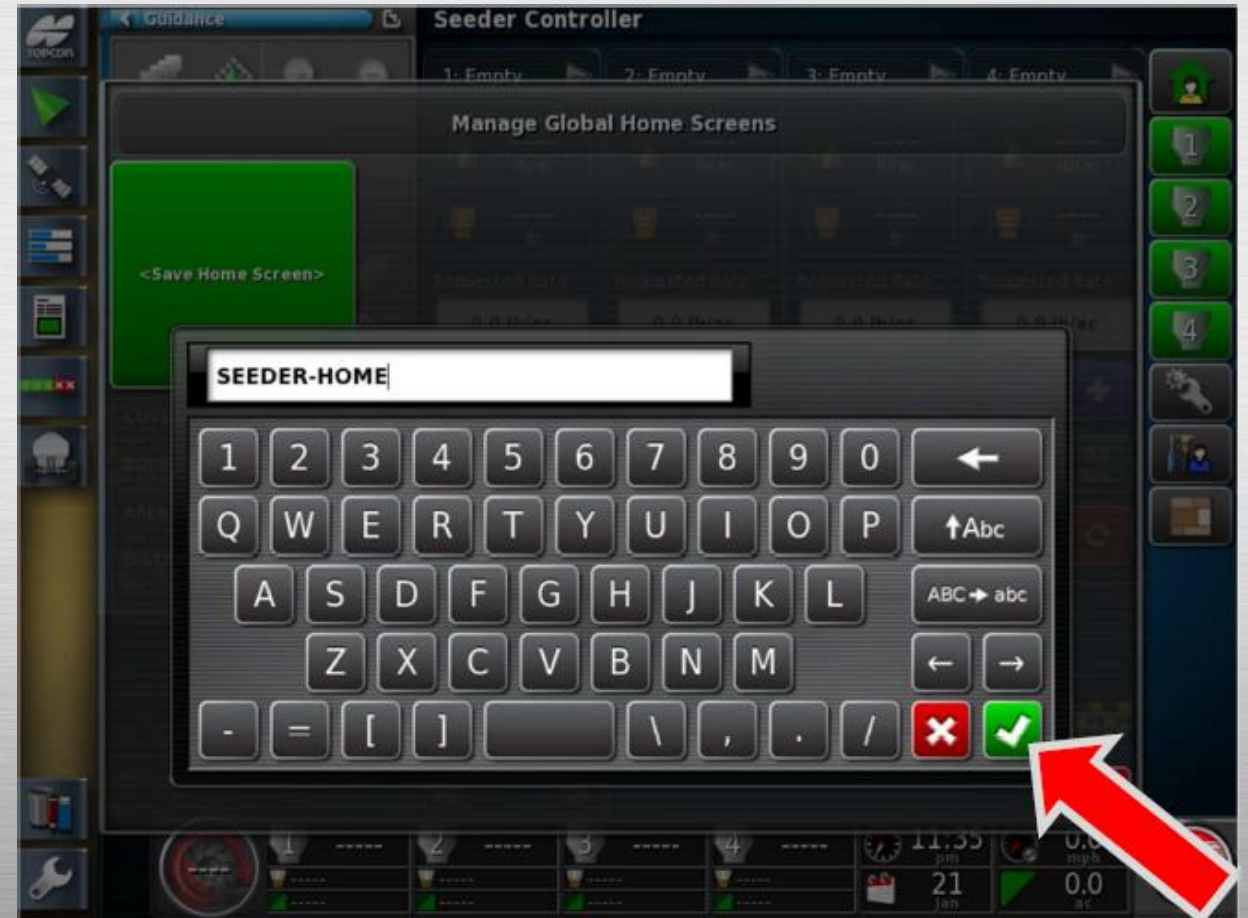
STEP 19

- The <Save Home Screen> window will appear, Tap within the window.



STEP 20

- Name the layout: **SEEDER-HOME**
- Apply the changes with the **Green Check mark**.
- **NOTE:** (use – instead of spaces)



STEP 21

- You will be brought back to the **SEEDER-HOME** screen, Expand the **Guidance** window into the main view.



STEP 22

- Press on the Hide this window **Seeder Controller** tab.



STEP 23

- Press the **Job Information** Icon.



STEP 24

- Press on the **Change Boom** for **Coverage** icon.



STEP 25

- Highlight **ICT-SECTION**; apply with the green Check Mark.



STEP 26

- Toggle the Map View Mode to the **Perspective View**.



STEP 27

- Zoom in or out using the + or – icons.



STEP 28

- Customize the **Dash Board** by simply tapping on the bottom row of icons. Adjust the **Select Data** to include: **Application Rate** and **Motor Load**. Apply your changes with the Green checkmark.



STEP 29

- Match the parameters in the Tank 2, 3, 4 Zones.



STEP 30

- Ensure your screen matches this layout. **Save a new Global Home Screen** by holding the **Yellow Topcon Logo** for 5 seconds.



STEP 31

- Tap the new **<Save Home Screen>** window.



STEP 32

- Name this layout: **MAPPING**



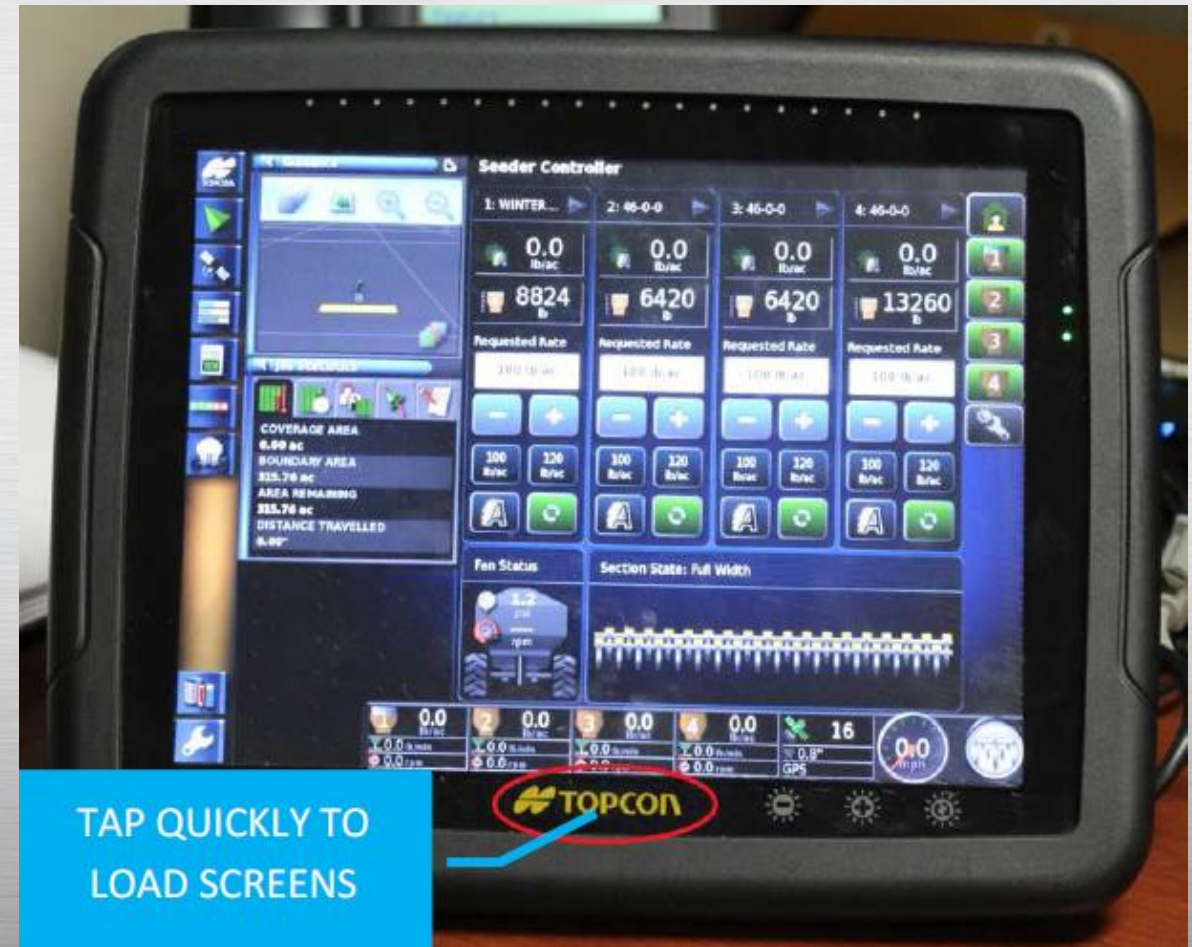
STEP 33

- You will now return to the Mapping screen.



STEP 34

- Now Tap the **Topcon** button for one second, this will bring up the **LOAD a GLOBAL HOME SCREEN** menu.



STEP 35

- Select **SEEDER-HOME**



STEP 36

- You will be brought back to the **SEEDER-HOME** screen.
- Hide the **Guidance** and **ASC** mini view windows. **Enable** the **Area Counter** Icon.



STEP 37

- Ensure your screen parameters match this layout.



STEP 38

- **Holding** the Topcon logo for 5 seconds, Tap the new **<Save Home Screen>** window.



STEP 39

- Save this home screen as **AREA-COUNTERS**.



STEP 40

- You will return to the **Area Counters** Home screen, Adjust the following;
 - Turn OFF VISIBILITY TANK 1, 2, 3, and 4
 - Turn OFF AREA COUNTERS
 - Turn OFF FAN
 - Turn ON the Configuration Wrench.



STEP 41

- Turn **ON**;
- Version Information
- GPS Information
- System Diagnostics.



STEP 42

- Customize the Dash Board by simply tapping on the bottom row of icons.



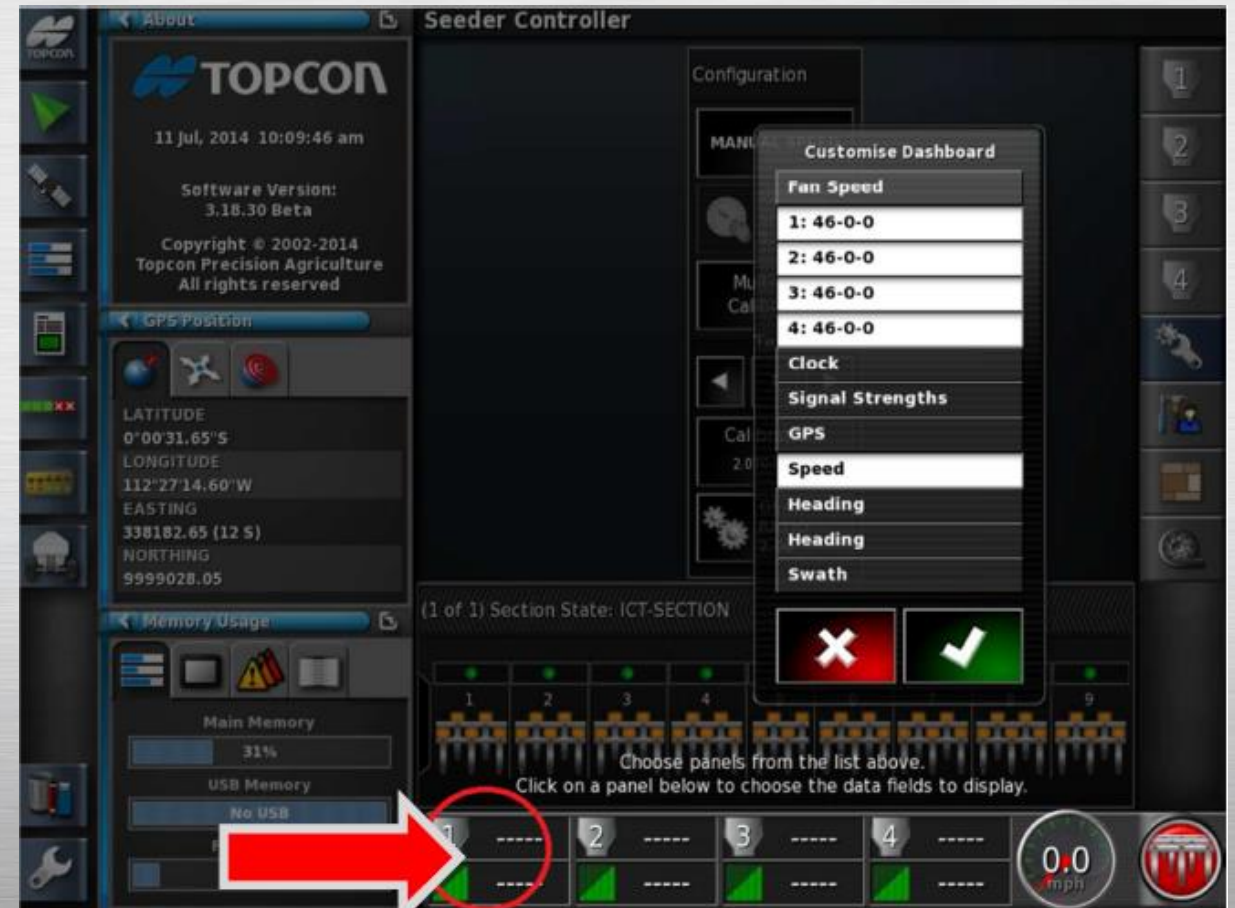
STEP 43

- **DISABLE THE FOLLOWING:**
 - Fan
 - Heading /Area Covered



STEP 44

- While the **Customize Dashboard** option is open, by tapping the Dashboard again within the **Tank 1 Zone** will allow for further customization.



STEP 45

- Highlight only **Calibration Factor** and **Motor Load**.
Apply with the Green checkmark.



STEP 46

- Continue adding **Calibration Factor** and **Motor Load** the remaining **Tanks Zones**. Apply with the Green Checkmark.



STEP 47

- Save a new Global Home Screen by holding the **Yellow Topcon Logo** for 5 seconds.



STEP 48

- Tap the new <Save Home Screen> window.



STEP 49

- Name this Layout:
CALIBRATION. Apply the settings by pressing the **Green Check mark**.



STEP 50

- By “**tapping**” the Topcon logo you can now quickly choose between the Global Home Screens that you have saved. Return by pressing the **Seeder-Home** icon.



STEP 51

- If you ever need to make adjustments to the screen templates, example (Adjusting Map layers) the screens layouts must be **resaved** after any changes have been made.
- To save the changes just hold the **Topcon logo for 5 seconds** and select the icon of the screen you modified. Tap **yes** to use the **Overwrite Home Screen** feature.



STEP 52

- You will be prompted to rename the home screen (**DO NOT rename**), simply apply the settings with the Green checkmark.



STEP 53

- The screen layouts are now locked into the monitor's memory.



